

For Research Use Only

# IL-6 Polyclonal antibody

Catalog Number: 26404-1-AP **37 Publications**



## Basic Information

Catalog Number: 26404-1-AP	GenBank Accession Number: NM_031168	Purification Method: Antigen affinity purification
Concentration: 700 µg/ml	GeneID (NCBI): 16193	Recommended Dilutions: WB 1:500-1:1000
Source: Rabbit	Full Name: interleukin 6	
Isotype: IgG	Calculated MW: 24 kDa	
Immunogen Catalog Number: AG24800	Observed MW: 24 kDa	

## Applications

Tested Applications: WB, ELISA	Positive Controls: WB : LPS and Brefeldin A treated RAW 264.7 cells,
Cited Applications: WB, IHC, IF, ELISA	
Species Specificity: mouse	
Cited Species: mouse, rat, chicken, bovine	

## Background Information

Interleukin-6 (IL-6) is an interleukin that acts as both a pro-inflammatory and anti-inflammatory cytokine. IL-6 protein is secreted by a variety of cell types including T cells and macrophages as phosphorylated and variably glycosylated molecule. IL-6 plays an essential role in the final differentiation of B-cells into Ig-secreting cells involved in lymphocyte and monocyte differentiation. It induces myeloma and plasmacytoma growth and induces nerve cells differentiation. Acts on B-cells, T-cells, hepatocytes, hematopoietic progenitor cells and cells of the CNS. IL-6 is also considered a myokine, a cytokine produced from muscle, and is elevated in response to muscle contraction. IL-6 has been shown to interact with interleukin-6 receptor and glycoprotein 130. Additionally, IL-6 is involved in hematopoiesis, bone metabolism, and cancer progression, and has been defined an essential role in directing transition from innate to acquired immunity.

## Notable Publications

Author	Pubmed ID	Journal	Application
Zeping Xu	36188464	Front Neurosci	WB
Peng-cheng Tu	35915804	Biomed Res Int	ELISA
Honghao Yu	35864548	J Transl Med	WB

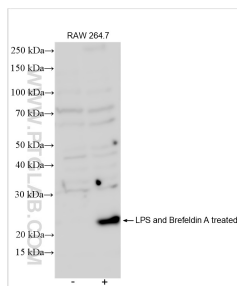
## Storage

**Storage:**  
Store at -20°C. Stable for one year after shipment.  
**Storage Buffer:**  
PBS with 0.02% sodium azide and 50% glycerol, pH7.3  
**Aliquoting is unnecessary for -20°C storage**

For technical support and original validation data for this product please contact:  
T: 4006900926 E: Proteintech-CN@ptglab.com W: ptgcn.com

**This product is exclusively available under Proteintech Group brand and is not available to purchase from any other manufacturer.**

## Selected Validation Data



untreated, LPS and Brefeldin A treated RAW 264.7 cells were subjected to SDS PAGE followed by western blot with 26404-1-AP (IL-6 antibody) at dilution of 1:600 incubated at room temperature for 1.5 hours.