

For Research Use Only

LRRC42 Polyclonal antibody

Catalog Number: 26348-1-AP



Basic Information

Catalog Number:

26348-1-AP

Source:

Rabbit

Isotype:

IgG

Immunogen Catalog Number:

AG23710

GenBank Accession Number:

BC013101

GeneID (NCBI):

115353

UNIPROT ID:

Q9Y546

Full Name:

leucine rich repeat containing 42

Observed MW:

45-48 kDa

Purification Method:

Antigen affinity purification

Recommended Dilutions:

WB: 1:1000-1:8000

Applications

Tested Applications:

WB, ELISA

Species Specificity:

human

Positive Controls:

WB: A431 cells, K-562 cells, SH-SY5Y cells, SK-N-SH cells

Background Information

LRRC42 (Leucine-Rich Repeating-Containing Protein 42) is a human protein, which is encoded by LRRC 42 gene and contains leucine-rich repetitive sequences. This protein exists in human body and is considered as a potential biomarker in many tumor types, which is involved in the key cellular process of cancer development and may be related to immune cell infiltration.

Storage

Storage:

Store at -20°C. Stable for one year after shipment.

Storage Buffer:

PBS with 0.02% sodium azide and 50% glycerol, pH7.3

Aliquoting is unnecessary for -20°C storage

For technical support and original validation data for this product please contact:

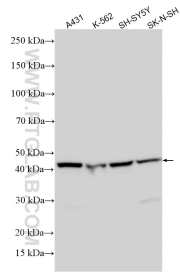
T: 4006900926

E: Proteintech-CN@ptglab.com

W: ptgcn.com

This product is exclusively available under Proteintech Group brand and is not available to purchase from any other manufacturer.

Selected Validation Data



Various lysates were subjected to SDS PAGE followed by western blot with 26348-1-AP (LRRC42 antibody) at dilution of 1:4000 incubated at room temperature for 1.5 hours.