

For Research Use Only

C19orf21 Polyclonal antibody

Catalog Number: 26338-1-AP **4 Publications**



Basic Information

Catalog Number:

26338-1-AP

Size:

600 µg/ml

Source:

Rabbit

Isotype:

IgG

Immunogen Catalog Number:

AG23712

GenBank Accession Number:

BC052236

GeneID (NCBI):

126353

UNIPROT ID:

Q8IVT2

Full Name:

chromosome 19 open reading frame

21

Observed MW:

75 kDa

Purification Method:

Antigen affinity purification

Recommended Dilutions:

WB 1:1000-1:4000

IF 1:50-1:500

Applications

Tested Applications:

IF, WB, ELISA

Cited Applications:

WB, IP, IF

Species Specificity:

human

Cited Species:

human, mouse

Positive Controls:

WB : MCF-7 cells, HepG2 cells

IF : HepG2 cells,

Background Information

C19orf21, also named as MISP, plays a role in mitotic spindle orientation and mitotic progression. It may be required for directed cell migration and centrosome orientation. C19orf21 regulates the distribution of dynactin at the cell cortex in a PLK1-dependent manner.

Notable Publications

Author	Pubmed ID	Journal	Application
Xinyang Huang	35433491	Front Oncol	WB
Bin Zhou	34226533	Cell Death Discov	WB
Koki Hiura	36596561	J Vet Med Sci	WB, IF

Storage

Storage:

Store at -20°C. Stable for one year after shipment.

Storage Buffer:

PBS with 0.02% sodium azide and 50% glycerol pH 7.3.

Aliquoting is unnecessary for -20°C storage

For technical support and original validation data for this product please contact:

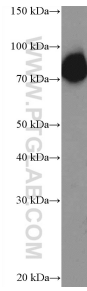
T: 4006900926

E: Proteintech-CN@ptglab.com

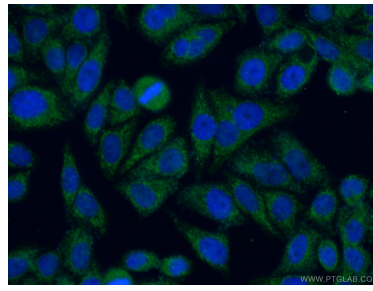
W: ptgcn.com

This product is exclusively available under Proteintech Group brand and is not available to purchase from any other manufacturer.

Selected Validation Data



MCF-7 cells were subjected to SDS PAGE followed by western blot with 26338-1-AP (C19orf21 Antibody) at dilution of 1:2000 incubated at room temperature for 1.5 hours.



Immunofluorescent analysis of (4% PFA) fixed HepG2 cells using 26338-1-AP (C19orf21 antibody) at dilution of 1:50 and Alexa Fluor 488-conjugated AffiniPure Goat Anti-Rabbit IgG(H+L).