

For Research Use Only

# CCDC66 Polyclonal antibody, PBS Only

Catalog Number: 26333-1-PBS



## Basic Information

Catalog Number:

26333-1-PBS

Source:

Rabbit

Isotype:

IgG

Immunogen Catalog Number:

AG23421

GenBank Accession Number:

BC132827

GeneID (NCBI):

285331

UNIPROT ID:

A2RUB6

Full Name:

coiled-coil domain containing 66

Observed MW:

105-125 kDa

Purification Method:

Antigen affinity purification

## Applications

Tested Applications:

WB, ELISA

Species Specificity:

human

## Background Information

CCDC66 is a MAP that localizes to the centriolar satellites, the centrosome and the primary cilium and is linked in ciliopathies affecting retina and brain. It interacts with the ciliopathy proteins CEP104 and CSPP1 and controls axonemal elongation (PMID: 36606424). CCDC66 is required for the basal body recruitment of transition zone proteins and intraflagellar transport B (IFT-B) machinery.

## Storage

Storage:

Store at -80°C.

**The product is shipped with ice packs. Upon receipt, store it immediately at -80°C**

Storage Buffer:

PBS only, pH7.3

For technical support and original validation data for this product please contact:

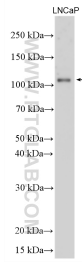
T: 4006900926

E: [Proteintech-CN@ptglab.com](mailto:Proteintech-CN@ptglab.com)

W: [ptgcn.com](http://ptgcn.com)

**This product is exclusively available under Proteintech Group brand and is not available to purchase from any other manufacturer.**

## Selected Validation Data



LNCaP cells were subjected to SDS PAGE followed by western blot with 26333-1-AP (CCDC66 antibody) at dilution of 1:1500 incubated at room temperature for 1.5 hours. This data was developed using the same antibody clone with 26333-1-PBS in a different storage buffer formulation.