

For Research Use Only

# GPAT2 Polyclonal antibody, PBS Only

Catalog Number: 26328-1-PBS



## Basic Information

Catalog Number:

26328-1-PBS

Source:

Rabbit

Isotype:

IgG

Immunogen Catalog Number:

AG23677

GenBank Accession Number:

BC068596

GeneID (NCBI):

150763

UNIPROT ID:

Q6NUI2

Full Name:

hypothetical protein LOC150763

Observed MW:

88 kDa

Purification Method:

Antigen affinity purification

## Applications

Tested Applications:

WB, IP, Indirect ELISA

Species Specificity:

human, mouse, rat

## Background Information

### Storage

Storage:

Store at -80°C.

The product is shipped with ice packs. Upon receipt, store it immediately at -80°C

Storage Buffer:

PBS only, pH7.3

For technical support and original validation data for this product please contact:

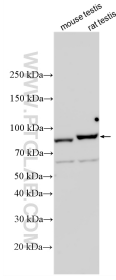
T: 4006900926

E: [Proteintech-CN@ptglab.com](mailto:Proteintech-CN@ptglab.com)

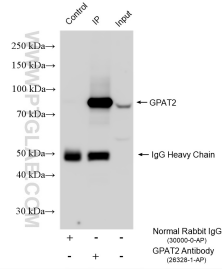
W: [ptgcn.com](http://ptgcn.com)

This product is exclusively available under Proteintech Group brand and is not available to purchase from any other manufacturer.

## Selected Validation Data



Various lysates were subjected to SDS PAGE followed by western blot with 26328-1-AP (GPAT2 antibody) at dilution of 1:5000 incubated at room temperature for 1.5 hours. This data was developed using the same antibody clone with 26328-1-PBS in a different storage buffer formulation.



IP result of anti-GPAT2 (IP:26328-1-AP, 4ug; Detection:26328-1-AP 1:1000) with rat testis tissue lysate 1800 ug. This data was developed using the same antibody clone with 26328-1-PBS in a different storage buffer formulation.