

For Research Use Only

# RNF144B/IBRDC2 Polyclonal antibody

Catalog Number: 26306-1-AP

1 Publications



## Basic Information

Catalog Number:

26306-1-AP

Size:

450 µg/ml

Source:

Rabbit

Isotype:

IgG

Immunogen Catalog Number:

AG23679

GenBank Accession Number:

BC063311

GeneID (NCBI):

255488

UNIPROT ID:

Q7Z419

Full Name:

ring finger protein 144B

Observed MW:

34 kDa

Purification Method:

Antigen affinity purification

Recommended Dilutions:

WB 1:500-1:1000

IP 0.5-4.0 µg for 1.0-3.0 mg of total protein lysate

IHC 1:100-1:400

## Applications

Tested Applications:

WB, IP, IHC, ELISA

Cited Applications:

WB, IP, CoIP

Species Specificity:

human

Cited Species:

human

**Note-IHC: suggested antigen retrieval with TE buffer pH 9.0; (\*) Alternatively, antigen retrieval may be performed with citrate buffer pH 6.0**

Positive Controls:

WB : HeLa cells,

IP : HeLa cells,

IHC : human kidney tissue,

## Background Information

### Notable Publications

Author	Pubmed ID	Journal	Application
Guoxiu Li	39285245	EMBO Rep	WB,IP,CoIP

## Storage

Storage:

Store at -20°C. Stable for one year after shipment.

Storage Buffer:

PBS with 0.02% sodium azide and 50% glycerol pH 7.3.

Aliquoting is unnecessary for -20°C storage

For technical support and original validation data for this product please contact:

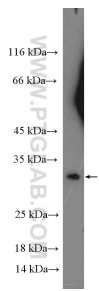
T: 4006900926

E: [Proteintech-CN@ptglab.com](mailto:Proteintech-CN@ptglab.com)

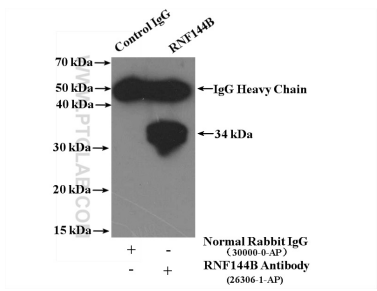
W: [ptgcn.com](http://ptgcn.com)

This product is exclusively available under Proteintech Group brand and is not available to purchase from any other manufacturer.

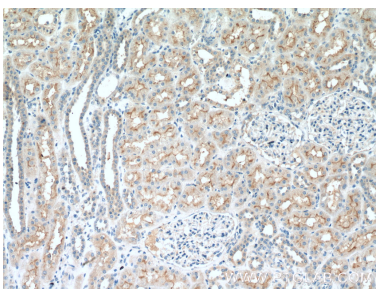
Selected Validation Data



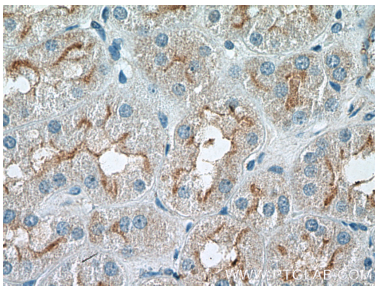
HeLa cells were subjected to SDS PAGE followed by western blot with 26306-1-AP (RNF144B/IBRDC2 antibody at dilution of 1:600 incubated at room temperature for 1.5 hours.



IP result of anti-RNF144B/IBRDC2 (IP:26306-1-AP, 4ug; Detection:26306-1-AP 1:300) with HeLa cells lysate 2400ug.



Immunohistochemical analysis of paraffin-embedded human kidney tissue slide using 26306-1-AP (RNF144B/IBRDC2 antibody at dilution of 1:200 (under 10x lens).



Immunohistochemical analysis of paraffin-embedded human kidney tissue slide using 26306-1-AP (RNF144B/IBRDC2 antibody at dilution of 1:200 (under 40x lens).