

For Research Use Only

# SFR1 Polyclonal antibody, PBS Only

Catalog Number: 26284-1-PBS

Featured Product



## Basic Information

**Catalog Number:**

26284-1-PBS

**Source:**

Rabbit

**Isotype:**

IgG

**Immunogen Catalog Number:**

AG23332

**GenBank Accession Number:**

BC140835

**GeneID (NCBI):**

119392

**UNIPROT ID:**

Q86XK3

**Full Name:**

chromosome 10 open reading frame  
78

**Observed MW:**

35, 36 kDa

**Purification Method:**

Antigen affinity purification

## Applications

**Tested Applications:**

WB, ELISA

**Species Specificity:**

human

## Background Information

The SFR1 protein was initially discovered in the context of DNA homologous recombination repair, and its name originates from "Swi6-interacting recombination repair protein 1." However, subsequent research has revealed its central role in the field of cell death, particularly in the process of "necroptosis". In the classical necroptosis signaling pathway, when cells receive death signals such as tumor necrosis factor, SFR1 is recruited and phosphorylated by the upstream kinase RIPK3 as a key adaptor protein. Phosphorylated SFR1 specifically binds to and stabilizes MLKL, the core executioner protein of necroptosis, significantly promoting the phosphorylation and subsequent activation of MLKL by RIPK3. This process ultimately leads to plasma membrane rupture and inflammatory cell death. Therefore, SFR1 is considered a critical molecule that precisely regulates the amplification and execution of necroptosis signaling. The study of its function is of great importance for understanding pathological processes such as infections, inflammatory diseases, and tissue damage.

## Storage

**Storage:**

Store at -80°C.

**The product is shipped with ice packs. Upon receipt, store it immediately at -80°C**

**Storage Buffer:**

PBS only, pH7.3

For technical support and original validation data for this product please contact:

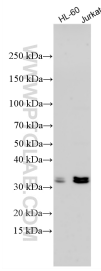
T: 4006900926

E: [Proteintech-CN@ptglab.com](mailto:Proteintech-CN@ptglab.com)

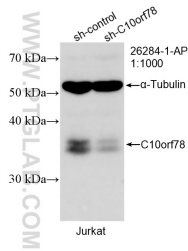
W: [ptgcn.com](http://ptgcn.com)

**This product is exclusively available under Proteintech Group brand and is not available to purchase from any other manufacturer.**

## Selected Validation Data



Various lysates were subjected to SDS PAGE followed by western blot with 26284-1-AP (C10orf78 antibody) at dilution of 1:2000 incubated at room temperature for 1.5 hours. This data was developed using the same antibody clone with 26284-1-PBS in a different storage buffer formulation.



WB result of C10orf78 antibody (26284-1-AP; 1:1000; incubated at room temperature for 1.5 hours) with sh-Control and sh-C10orf78 transfected Jurkat cells. This data was developed using the same antibody clone with 26284-1-PBS in a different storage buffer formulation.