

For Research Use Only

CHM Polyclonal antibody, PBS Only

Catalog Number: 26251-1-PBS



Basic Information

Catalog Number: 26251-1-PBS	GenBank Accession Number: BC063522	Purification Method: Antigen affinity purification
Size: 1 mg/ml	GeneID (NCBI): 1121	
Source: Rabbit	UNIPROT ID: P24386	
Isotype: IgG	Full Name: choroideremia (Rab escort protein 1)	
Immunogen Catalog Number: AG23166	Observed MW: 95 kDa	

Applications

Tested Applications:
WB, IHC, IF/ICC, Indirect ELISA

Species Specificity:
human

Background Information

CHM (Choroideremia protein) is also named as Rab escort protein 1 (REP-1), TCD and Rab proteins geranylgeranyltransferase component A 1. Choroideremia (CHM) is an X-linked recessive eye disease that is caused by null mutations in REP-1, a gene involved in the regulation of Rab GTPases and intracellular vesicular transport (PMID: 9067750, PMID: 16936131). REP-1 is involved in trafficking of Rab proteins in the cell. And REP-1 binds newly synthesized Rab proteins and presents them to the catalytic site of RabGGTase (PMID: 19427510). RAB-27 in several neurons, such as motor neurons at neuromuscular junctions, requires REP-1 for normal synaptic transmission responsible for aldicarb sensitivity (PMID: 19090809). REP-1 acts as a component of the protein complex. There are two similar Rab escort proteins (75% sequence identity): REP-1 and REP-2. A 95-kDa protein (previously designated component A and now called REP-1) is present (PMID: 8294464, PMID: 17140818).

Storage

Storage:
Store at -80°C.
The product is shipped with ice packs. Upon receipt, store it immediately at -80°C

Storage Buffer:
PBS Only

For technical support and original validation data for this product please contact:

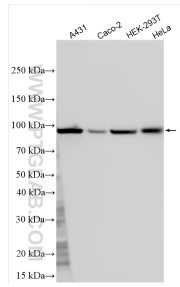
T: 4006900926

E: Proteintech-CN@ptglab.com

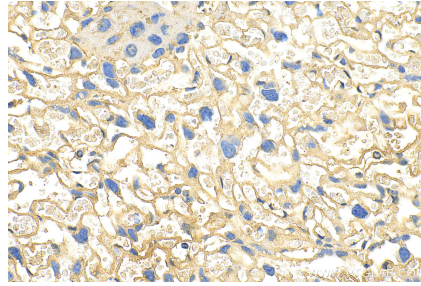
W: ptgcn.com

This product is exclusively available under Proteintech Group brand and is not available to purchase from any other manufacturer.

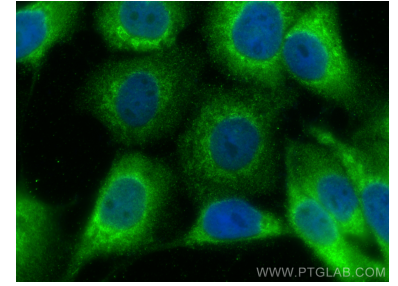
Selected Validation Data



Various lysates were subjected to SDS PAGE followed by western blot with 26251-1-AP (CHM antibody) at dilution of 1:1500 incubated at room temperature for 1.5 hours. This data was developed using the same antibody clone with 26251-1-PBS in a different storage buffer formulation.



Immunohistochemical analysis of paraffin-embedded mouse placenta tissue slide using 26251-1-AP (CHM antibody) at dilution of 1:200 (under 40x lens). Heat mediated antigen retrieval with Tris-EDTA buffer (pH 9.0). This data was developed using the same antibody clone with 26251-1-PBS in a different storage buffer formulation.



Immunofluorescent analysis of (-20°C Methanol) fixed A431 cells using CHM antibody (26251-1-AP) at dilution of 1:400 and Multi-rAb CoraLite® Plus 488-Goat Anti-Rabbit Recombinant Secondary Antibody (H+L) (RGAR002). This data was developed using the same antibody clone with 26251-1-PBS in a different storage buffer formulation.