

For Research Use Only

GIT1 Polyclonal antibody

Catalog Number: 26247-1-AP



Basic Information

Catalog Number:

26247-1-AP

Size:

300 µg/ml

Source:

Rabbit

Isotype:

IgG

Immunogen Catalog Number:

AG24648

GenBank Accession Number:

BC067358

GeneID (NCBI):

28964

UNIPROT ID:

Q9Y2X7

Full Name:

G protein-coupled receptor kinase
interacting ArfGAP 1

Calculated MW:

694 aa, 77 kDa

Observed MW:

80 kDa

Purification Method:

Antigen affinity purification

Recommended Dilutions:

WB 1:500-1:2000

Applications

Tested Applications:

WB, ELISA

Species Specificity:

human, rat

Positive Controls:

WB : ROS1728 cells,

Background Information

GIT1 (ARF GTPase-activating protein GIT1) is a member of the GIT subfamily of ADP ribosylation factor (ARF)-GTPase activating protein (GAP) family of proteins, which are characterized by an ARFGAP domain that stimulates the GTPase activity of proteins. GIT1 was highly expressed in the nervous system, and its expression was maintained throughout all brain neurogenesis stages (PMID: 27127481).

Storage

Storage:

Store at -20°C. Stable for one year after shipment.

Storage Buffer:

PBS with 0.02% sodium azide and 50% glycerol pH 7.3.

Aliquoting is unnecessary for -20°C storage

For technical support and original validation data for this product please contact:

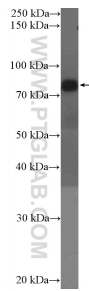
T: 4006900926

E: Proteintech-CN@ptglab.com

W: ptgcn.com

This product is exclusively available under Proteintech Group brand and is not available to purchase from any other manufacturer.

Selected Validation Data



ROS1728 cells were subjected to SDS PAGE followed by western blot with 26247-1-AP (GILT1 Antibody) at dilution of 1:1000 incubated at room temperature for 1.5 hours.