

For Research Use Only

# EDEM1 Polyclonal antibody

Catalog Number: 26226-1-AP

5 Publications



## Basic Information

Catalog Number:

26226-1-AP

Size:

800 µg/ml

Source:

Rabbit

Isotype:

IgG

Immunogen Catalog Number:

AG24046

GenBank Accession Number:

BC019088

GeneID (NCBI):

9695

UNIPROT ID:

Q92611

Full Name:

ER degradation enhancer,  
mannosidase alpha-like 1

Calculated MW:

74 kDa

Observed MW:

66-75 kDa

Purification Method:

Antigen affinity purification

Recommended Dilutions:

WB 1:500-1:1000

IP 0.5-4.0 µg for 1.0-3.0 mg of total  
protein lysate

IHC 1:50-1:500

## Applications

Tested Applications:

WB, IP, IHC, ELISA

Cited Applications:

WB

Species Specificity:

human, mouse, rat

Cited Species:

human, mouse

**Note-IHC: suggested antigen retrieval with  
TE buffer pH 9.0; (\*) Alternatively, antigen  
retrieval may be performed with citrate  
buffer pH 6.0**

Positive Controls:

WB : HepG2 cells, L02 cells, mouse liver, rat liver

IP : mouse liver tissue,

IHC : human liver cancer tissue,

## Background Information

### Notable Publications

Author	Pubmed ID	Journal	Application
Chengdong Liu	33110233	Oncogene	WB
Na Fu	33015132	Front Mol Biosci	WB
Nazli Khodayari	28419579	J Cell Biochem	WB

## Storage

Storage:

Store at -20°C. Stable for one year after shipment.

Storage Buffer:

PBS with 0.02% sodium azide and 50% glycerol pH 7.3.

Aliquoting is unnecessary for -20°C storage

For technical support and original validation data for this product please contact:

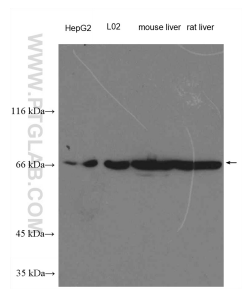
T: 4006900926

E: [Proteintech-CN@ptglab.com](mailto:Proteintech-CN@ptglab.com)

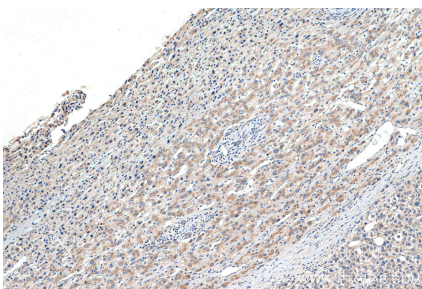
W: [ptgcn.com](http://ptgcn.com)

**This product is exclusively available under Proteintech Group brand and is not available to purchase from any other manufacturer.**

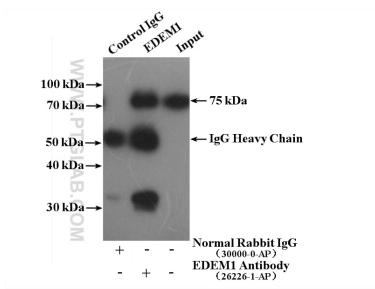
Selected Validation Data



Various lysates were subjected to SDS PAGE followed by western blot with 26226-1-AP (EDEM1 Antibody) at dilution of 1:600 incubated at room temperature for 1.5 hours.



Immunohistochemical analysis of paraffin-embedded human liver cancer tissue slide using 26226-1-AP (EDEM1 antibody) at dilution of 1:200 (under 0x lens). Heat mediated antigen retrieval with Tris-EDTA buffer (pH 9.0).



IP result of anti-EDEM1 (IP:26226-1-AP, 4ug; Detection:26226-1-AP 1:500) with mouse liver tissue lysate 4000ug.