

For Research Use Only

# PNLIPRP2 Polyclonal antibody

Catalog Number: 26218-1-AP



## Basic Information

Catalog Number:

26218-1-AP

Size:

1000 µg/ml

Source:

Rabbit

Isotype:

IgG

Immunogen Catalog Number:

AG23967

GenBank Accession Number:

BC005989

GeneID (NCBI):

5408

UNIPROT ID:

P54317

Full Name:

pancreatic lipase-related protein 2

Observed MW:

52 kDa

Purification Method:

Antigen affinity purification

Recommended Dilutions:

WB 1:2000-1:10000

IHC 1:100-1:400

## Applications

Tested Applications:

IHC, WB, ELISA

Species Specificity:

human, mouse, rat

**Note-IHC: suggested antigen retrieval with TE buffer pH 9.0; (\*) Alternatively, antigen retrieval may be performed with citrate buffer pH 6.0**

Positive Controls:

WB : mouse pancreas tissue, rat pancreas tissue

IHC : human pancreas tissue,

## Background Information

### Storage

Storage:

Store at -20°C. Stable for one year after shipment.

Storage Buffer:

PBS with 0.02% sodium azide and 50% glycerol pH 7.3.

Aliquoting is unnecessary for -20°C storage

For technical support and original validation data for this product please contact:

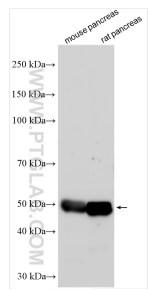
T: 4006900926

E: [Proteintech-CN@ptglab.com](mailto:Proteintech-CN@ptglab.com)

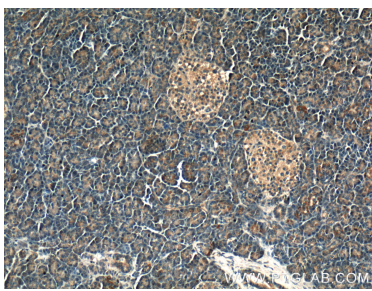
W: [ptgcn.com](http://ptgcn.com)

This product is exclusively available under Proteintech Group brand and is not available to purchase from any other manufacturer.

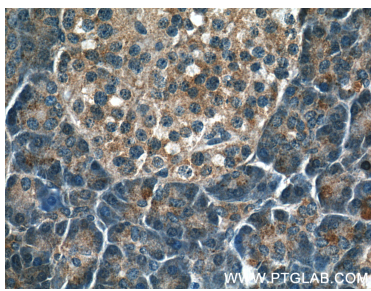
## Selected Validation Data



Various lysates were subjected to SDS PAGE followed by western blot with 26218-1-AP (PNLI PRP2 antibody) at dilution of 1:5000 incubated at room temperature for 1.5 hours.



Immunohistochemical analysis of paraffin-embedded human pancreas tissue slide using 26218-1-AP (PNLI PRP2 Antibody) at dilution of 1:200 (under 10x lens).



Immunohistochemical analysis of paraffin-embedded human pancreas tissue slide using 26218-1-AP (PNLI PRP2 Antibody) at dilution of 1:200 (under 40x lens).