

For Research Use Only

GLP1R Polyclonal antibody

Catalog Number: 26196-1-AP

Featured Product

25 Publications



Basic Information

Catalog Number:

26196-1-AP

Concentration:

900 µg/ml

Source:

Rabbit

Isotype:

IgG

Immunogen Catalog Number:

AG23529

GenBank Accession Number:

BC112126

GeneID (NCBI):

2740

UNIPROT ID:

P43220

Full Name:

glucagon-like peptide 1 receptor

Calculated MW:

463 aa, 53 kDa

Observed MW:

53 kDa

Purification Method:

Antigen affinity purification

Recommended Dilutions:

WB 1:500-1:2000

IHC 1:50-1:500

Applications

Tested Applications:

WB, IHC, ELISA

Cited Applications:

WB, IHC, IF, IP

Species Specificity:

human, mouse, rat

Cited Species:

human, mouse, rat

Note-IHC: suggested antigen retrieval with TE buffer pH 9.0; (*) Alternatively, antigen retrieval may be performed with citrate buffer pH 6.0

Positive Controls:

WB : mouse pancreas tissue, rat pancreas tissue

IHC : mouse lung tissue,

Background Information

GLP1R (glucagon-like peptide-1 receptor) is a G protein-coupled receptor belonging to the secretin receptor super-family, also known as class B (PMID:34911028). GLP1R is widely distributed in pancreatic islets, muscles, gastrointestinal tract, lung, liver, pancreas, and other tissues or organs (PMID:35989517). Moreover, GLP1R agonist has been reported to induce autophagy of EC (Endometrial carcinoma) cells, and high GLP1R expression may be associated with good prognosis of EC patients, suggesting that GLP1R is likely to participate in the progression of EC (PMID:29907137). Moreover, regarding the molecular weight of GLP1R, research shows that the bands at ~50 kDa and ~100 kDa belong to the monomer and dimer states of GLP1R (PMID: 28609478).

Notable Publications

| Author | Pubmed ID | Journal | Application |
|------------|-----------|---------------------|-------------|
| Ran Li | 36238196 | Drug Des Devel Ther | WB |
| Qiuyu Wang | 30301245 | Int J Mol Sci | WB |
| Bing Cao | 34817756 | Metab Brain Dis | IF, WB |

Storage

Storage:

Store at -20°C. Stable for one year after shipment.

Storage Buffer:

PBS with 0.02% sodium azide and 50% glycerol

Aliquoting is unnecessary for -20°C storage

For technical support and original validation data for this product please contact:

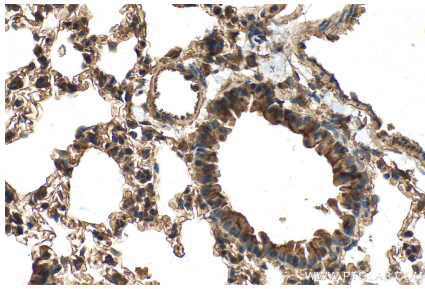
T: 4006900926

E: Proteintech-CN@ptglab.com

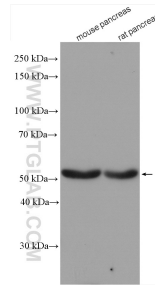
W: ptgcn.com

This product is exclusively available under Proteintech Group brand and is not available to purchase from any other manufacturer.

Selected Validation Data



Immunohistochemical analysis of paraffin-embedded mouse lung tissue slide using 26196-1-AP (GLP1R antibody) at dilution of 1:200 (under 40x lens). Heat mediated antigen retrieval with Tris-EDTA buffer (pH 9.0).



Various lysates were subjected to SDS PAGE followed by western blot with 26196-1-AP (GLP1R antibody) at dilution of 1:1000 incubated at room temperature for 1.5 hours.