

For Research Use Only

FPR1 Polyclonal antibody

Catalog Number: 26164-1-AP



Basic Information

Catalog Number: 26164-1-AP	GenBank Accession Number: BC005315	Purification Method: Antigen affinity purification
Source: Rabbit	GeneID (NCBI): 2357	Recommended Dilutions: WB: 1:500-1:2000
Isotype: IgG	UNIPROT ID: P21462	
Immunogen Catalog Number: AG23105	Full Name: formyl peptide receptor 1	
	Calculated MW: 38 kDa	
	Observed MW: 45 kDa	

Applications

Tested Applications: WB, ELISA	Positive Controls: WB : NCCIT cells, MDA-MB-231 cells
Species Specificity: human	

Background Information

FPR1 is a Gi-coupled innate immune GPCR that detects formylated peptides from bacteria and damaged mitochondria, initiating leukocyte chemotaxis and inflammatory activation. Predominantly expressed in neutrophils and monocytes, FPR1 functions as a frontline danger sensor in host defense. Dysregulated FPR1 signaling contributes to infectious susceptibility, acute inflammatory injury, and tumor-associated immune modulation, underscoring its importance in innate immunity and inflammatory disease.

Storage

Storage:
Store at -20°C. Stable for one year after shipment.
Storage Buffer:
PBS with 0.02% sodium azide and 50% glycerol, pH7.3
Aliquoting is unnecessary for -20°C storage

For technical support and original validation data for this product please contact:

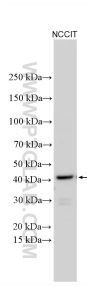
T: 4006900926

E: Proteintech-CN@ptglab.com

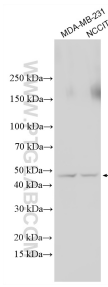
W: ptgcn.com

This product is exclusively available under Proteintech Group brand and is not available to purchase from any other manufacturer.

Selected Validation Data



Various lysates were subjected to SDS PAGE followed by western blot with 26164-1-AP (FPR1 antibody) at dilution of 1:1000 incubated at room temperature for 1.5 hours.



Various lysates were subjected to SDS PAGE followed by western blot with 26164-1-AP (FPR1 antibody) at dilution of 1:1000 incubated at room temperature for 1.5 hours.