

For Research Use Only

METTL14 Polyclonal antibody

Catalog Number: 26158-1-AP

Featured Product

141 Publications



Basic Information

Catalog Number:

26158-1-AP

Concentration:

550 ug/ml

Source:

Rabbit

Isotype:

IgG

Immunogen Catalog Number:

AG14325

GenBank Accession Number:

BC007449

GeneID (NCBI):

57721

UNIPROT ID:

Q9HCE5

Full Name:

methyltransferase like 14

Calculated MW:

456 aa, 52 kDa

Observed MW:

55-60 kDa

Purification Method:

Protein A purification

Recommended Dilutions:

WB 1:2000-1:10000

IP 0.5-4.0 ug for 1.0-3.0 mg of total protein lysate

Applications

Tested Applications:

WB, IP, ELISA

Cited Applications:

WB, IHC, IF, IP, CoIP, RIP

Species Specificity:

human

Cited Species:

human, pig, monkey, chicken

Positive Controls:

WB : A549 cells, HeLa cells, NCCIT cells, PC-3 cells

IP : A549 cells,

Background Information

METTL14, is also named as Methyltransferase-like protein 14 or KIAA1627, is a 456 amino acid protein, which belongs to the MT-A70-like family and localized in the nucleus. The METTL3-METTL14 heterodimer forms a N6-methyltransferase complex that methylates adenosine residues of some mRNAs and regulates the circadian clock and differentiation of embryonic stem cells. N6-methyladenosine (m6A), which takes place at the 5'-[AG]GAC-3' consensus sites of some mRNAs, plays a role in the efficiency of mRNA splicing, processing and mRNA stability. M6A regulates the length of the circadian clock: acts as a early pace-setter in the circadian loop. M6A also acts as a regulator of mRNA stability: in embryonic stem cells (ESCs), m6A methylation of mRNAs encoding key naïve pluripotency-promoting transcripts results in transcript destabilization.

Notable Publications

Author	Pubmed ID	Journal	Application
Seiya Takemoto	34536357	Biochem Pharmacol	WB
FANG YANG	34733365	Oncol Lett	WB
Motoki Isono	36113565	Biochem Pharmacol	WB

Storage

Storage:

Store at -20°C. Stable for one year after shipment.

Storage Buffer:

PBS with 0.02% sodium azide and 50% glycerol, pH7.3

Aliquoting is unnecessary for -20°C storage

For technical support and original validation data for this product please contact:

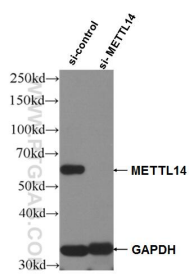
T: 4006900926

E: Proteintech-CN@ptglab.com

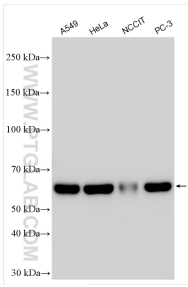
W: ptgcn.com

This product is exclusively available under Proteintech Group brand and is not available to purchase from any other manufacturer.

Selected Validation Data



WB result of METTL14 antibody (26158-1-AP; 1:3000; incubated at room temperature for 1.5 hours) with sh-Control and sh-METTL14 transfected Raji cells.



Various lysates were subjected to SDS PAGE followed by western blot with 26158-1-AP (METTL14 antibody) at dilution of 1:5000 incubated at room temperature for 1.5 hours.

IP result of anti-METTL14 (IP:26158-1-AP, 4ug; Detection:26158-1-AP 1:2000) with A549 cells lysate 880 ug.