

For Research Use Only

GPM6B Polyclonal antibody

Catalog Number: 26122-1-AP



Basic Information

Catalog Number:

26122-1-AP

Source:

Rabbit

Isotype:

IgG

Immunogen Catalog Number:

AG23507

GenBank Accession Number:

BC047295

GeneID (NCBI):

2824

UNIPROT ID:

Q13491

Full Name:

glycoprotein M6B

Observed MW:

27-36 kDa

Purification Method:

Antigen affinity purification

Recommended Dilutions:

WB: 1:1000-1:6000

IP: 0.5-4.0 ug for 1.0-3.0 mg of total protein lysate

IHC: 1:50-1:500

IF-P: 1:50-1:500

Applications

Tested Applications:

WB, IHC, IF-P, IP, ELISA

Species Specificity:

human, mouse, rat

Note-IHC: suggested antigen retrieval with TE buffer pH 9.0; (*) Alternatively, antigen retrieval may be performed with citrate buffer pH 6.0

Positive Controls:

WB: mouse brain tissue, 37°C incubated mouse brain tissue

IP: rat brain tissue,

IHC: mouse brain tissue,

IF-P: mouse brain tissue,

Background Information

GPM6B (Glycoprotein M6B) is a highly conserved, multi-pass transmembrane glycoprotein encoded by the GPM6B gene on human chromosome Xp22.2. As a member of the proteolipid protein family, it is predominantly expressed in the central nervous system (in neurons and oligodendrocytes) and is involved in key processes such as myelination, regulation of serotonin transporter (SERT) trafficking, and actin cytoskeleton maintenance. Beyond neural functions, GPM6B also promotes bone formation by regulating osteoblast mineralization and influences smooth muscle cell differentiation via the TGF beta Smad2/3 pathway. Subcellularly, it localizes to the plasma membrane and lipid rafts. Genetic variations in GPM6B have been associated with several disorders, including Pelizaeus Merzbacher disease, major depressive disorder, and osteoarthritis.

Storage

Storage:

Store at -20°C. Stable for one year after shipment.

Storage Buffer:

PBS with 0.02% sodium azide and 50% glycerol, pH7.3

Aliquoting is unnecessary for -20°C storage

For technical support and original validation data for this product please contact:

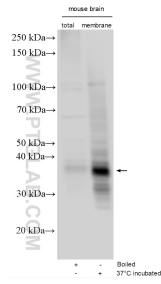
T: 4006900926

E: Proteintech-CN@ptglab.com

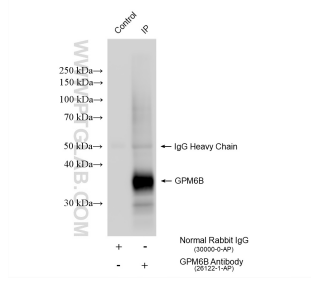
W: ptgcn.com

This product is exclusively available under Proteintech Group brand and is not available to purchase from any other manufacturer.

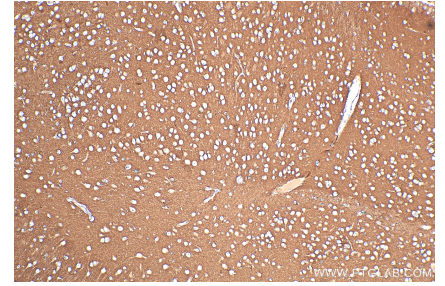
Selected Validation Data



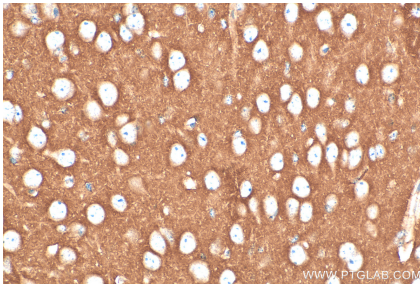
Various lysates were subjected to SDS PAGE followed by western blot with 26122-1-AP (GPM6B antibody) at dilution of 1:3000 incubated at room temperature for 1.5 hours.



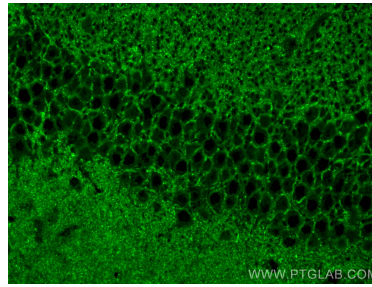
IP result of anti-GPM6B (IP:26122-1-AP, 4 μ g; Detection:26122-1-AP 1:1000) with rat brain tissue lysate 1720 μ g.



Immunohistochemical analysis of paraffin-embedded mouse brain tissue slide using 26122-1-AP (GPM6B antibody) at dilution of 1:200 (under 10 \times lens). Heat mediated antigen retrieval with Tris-EDTA buffer (pH 9.0).



Immunohistochemical analysis of paraffin-embedded mouse brain tissue slide using 26122-1-AP (GPM6B antibody) at dilution of 1:200 (under 40 \times lens). Heat mediated antigen retrieval with Tris-EDTA buffer (pH 9.0).



Immunofluorescent analysis of (4% PFA) fixed mouse brain tissue using GPM6B antibody (26122-1-AP) at dilution of 1:200 and CoraLite@488-Conjugated AffiniPure Goat Anti-Rabbit IgG(H+L).