

For Research Use Only

# LRP1 Polyclonal antibody, PBS Only

Catalog Number: 26106-1-PBS



## Basic Information

Catalog Number:

26106-1-PBS

Concentration:

1 mg/ml

Source:

Rabbit

Isotype:

IgG

Immunogen Catalog Number:

AG23098

GenBank Accession Number:

BC045107

GeneID (NCBI):

4035

UNIPROT ID:

Q07954

Full Name:

low density lipoprotein-related protein 1 (alpha-2-macroglobulin receptor)

Calculated MW:

505 kDa

Observed MW:

85-90 kDa

Purification Method:

Antigen affinity purification

## Applications

Tested Applications:

WB, IHC, IP, ELISA

Species Specificity:

human, mouse

## Background Information

LRP1 (Prolow-density lipoprotein receptor-related protein 1), also known as A2MR, is a multifunctional cell surface receptor that interacts through its cytoplasmic tail with adaptor and scaffold proteins that participate in cellular signaling. It is synthesized in the endoplasmic reticulum as a transmembrane glycosylated precursor that migrates with an apparent molecular mass of about 600 kD on SDS-polyacrylamide gels. After it reaches the Golgi complex, the protein is cleaved to generate two subunits with apparent molecular masses of approximately 515 and 85 kD respectively (PMID: 2112085). It involved in cellular lipid homeostasis. Involved in the plasma clearance of chylomicron remnants and activated LRPAP1 (alpha 2-macroglobulin), as well as the local metabolism of complexes between plasminogen activators and their endogenous inhibitors. Acts as an LRPAP1 alpha-2-macroglobulin receptor. May modulate cellular events, such as APP metabolism, kinase-dependent intracellular signaling, neuronal calcium signaling as well as neurotransmission (PMID:12888553).

## Storage

Storage:

Store at -80°C.

The product is shipped with ice packs. Upon receipt, store it immediately at -80°C

Storage Buffer:

PBS only, pH7.3

For technical support and original validation data for this product please contact:

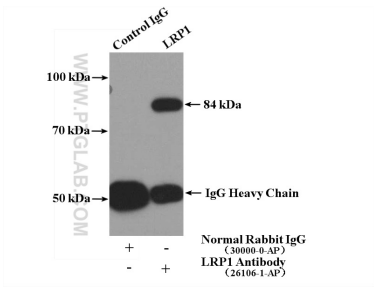
T: 4006900926

E: [Proteintech-CN@ptglab.com](mailto:Proteintech-CN@ptglab.com)

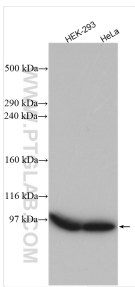
W: [ptgcn.com](http://ptgcn.com)

This product is exclusively available under Proteintech Group brand and is not available to purchase from any other manufacturer.

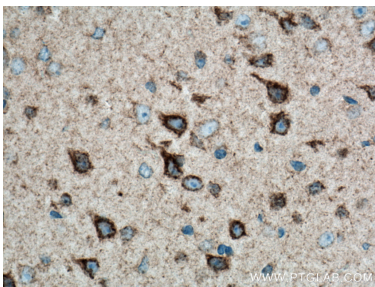
## Selected Validation Data



IP result of anti-LRP1 (IP:26106-1-AP, 4ug; Detection:26106-1-AP 1:300) with mouse liver tissue lysate 4000ug. This data was developed using the same antibody clone with 26106-1-PBS in a different storage buffer formulation.



Various lysates were subjected to SDS PAGE followed by western blot with 26106-1-AP (LRP1 antibody) at dilution of 1:1000 incubated at room temperature for 1.5 hours. This data was developed using the same antibody clone with 26106-1-PBS in a different storage buffer formulation.



Immunohistochemical analysis of paraffin-embedded mouse brain tissue slide using 26106-1-AP (LRP1 antibody) at dilution of 1:200 (under 0x lens. Heat mediated antigen retrieval with Tris-EDTA buffer (pH 9.0). This data was developed using the same antibody clone with 26106-1-PBS in a different storage buffer formulation.