

For Research Use Only

DUSP6 Polyclonal antibody, PBS Only

Catalog Number: 26071-1-PBS



Basic Information

Catalog Number: 26071-1-PBS	GenBank Accession Number: BC003562	Purification Method: Antigen affinity purification
Size: 1 mg/ml	GeneID (NCBI): 1848	
Source: Rabbit	UNIPROT ID: Q16828	
Isotype: IgG	Full Name: dual specificity phosphatase 6	
Immunogen Catalog Number: AG23474	Calculated MW: 42 kDa	
	Observed MW: 42 kDa	

Applications

Tested Applications:
WB, IHC, IF/ICC, FC (Intra), IP, Indirect ELISA

Species Specificity:
human, mouse, rat

Background Information

Dual specificity phosphatase 6 (DUSP6) is a member of the family of mitogen-activated protein kinase (MAPK) phosphatases, which dephosphorylate and inactivate MAPK (PMID: 9858808). The MAPK pathway is an important signal transduction system that serves cellular processes, such as proliferation, differentiation, migration, and apoptosis. DUSP6 resides at chromosome location 12q22-23, which is one of the candidate loci for susceptibility to bipolar disorder and which encodes a phosphatase selective for extracellular signal-regulated kinase (ERK) (PMID: 9205128). DUSP6 inactivates extracellular signal-regulated kinase (ERK), and can act in tumor suppressive pathways, whose expression is reduced in several different types of cancer. (PMID: 21680106).

Storage

Storage:
Store at -80°C.
The product is shipped with ice packs. Upon receipt, store it immediately at -80°C
Storage Buffer:
PBS Only

For technical support and original validation data for this product please contact:

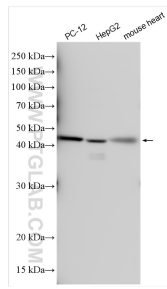
T: 4006900926

E: Proteintech-CN@ptglab.com

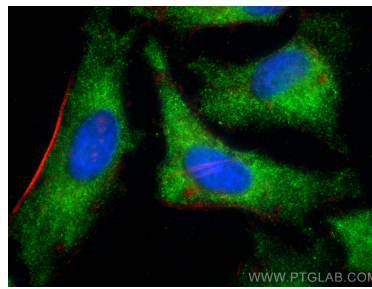
W: ptgcn.com

This product is exclusively available under Proteintech Group brand and is not available to purchase from any other manufacturer.

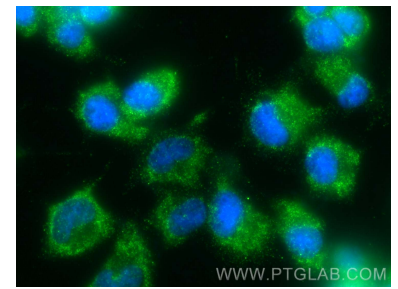
Selected Validation Data



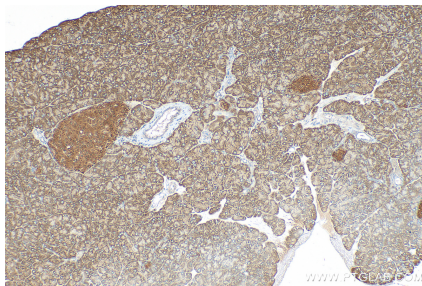
Various lysates were subjected to SDS PAGE followed by western blot with 26071-1-AP (DUSP6 antibody) at dilution of 1:500 incubated at room temperature for 1.5 hours. This data was developed using the same antibody clone with 26071-1-PBS in a different storage buffer formulation.



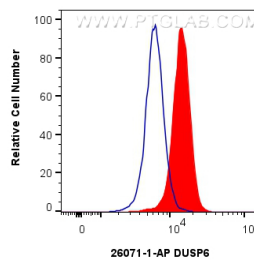
Immunofluorescent analysis of (-20°C Ethanol) fixed HeLa cells using DUSP6 antibody (26071-1-AP) at dilution of 1:400 and CoraLite®488-Conjugated AffiniPure Goat Anti-Rabbit IgG(H+L) (SA00013-2), CL594-phalloidin (red). This data was developed using the same antibody clone with 26071-1-PBS in a different storage buffer formulation.



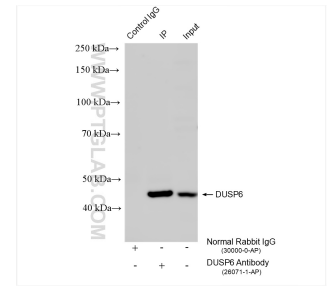
Immunofluorescent analysis of (-20°C Ethanol) fixed PC-12 cells using DUSP6 antibody (26071-1-AP) at dilution of 1:400 and CoraLite®488-Conjugated AffiniPure Goat Anti-Rabbit IgG(H+L) (SA00013-2). This data was developed using the same antibody clone with 26071-1-PBS in a different storage buffer formulation.



Immunohistochemical analysis of paraffin-embedded mouse pancreas tissue slide using 26071-1-AP (DUSP6 antibody) at dilution of 1:200 (under 10x lens). Heat mediated antigen retrieval with Tris-EDTA buffer (pH 9.0). This data was developed using the same antibody clone with 26071-1-PBS in a different storage buffer formulation.



1x10⁶ HeLa cells were intracellularly stained with 0.25 ug DUSP6 Polyclonal antibody (26071-1-AP) and CoraLite®488-Conjugated Goat Anti-Rabbit IgG(H+L) (SA00013-2)(red), or 0.25 ug Rabbit IgG Isotype Control Recombinant Antibody (98136-1-RR, Clone: 240953C9) (blue). Cells were fixed with 4% PFA and permeabilized with Flow Cytometry Perm Buffer (PF00011-C). This data was developed using the same antibody clone with 26071-1-PBS in a



IP result of anti-DUSP6 (IP:26071-1-AP, 4ug; Detection:26071-1-AP 1:1000) with PC-12 cells lysate 1040 ug. This data was developed using the same antibody clone with 26071-1-PBS in a different storage buffer formulation.