

For Research Use Only

SLFN11 Polyclonal antibody

Catalog Number: 26060-1-AP

1 Publications



Basic Information

Catalog Number:

26060-1-AP

Size:

300 ug/ml

Source:

Rabbit

Isotype:

IgG

Immunogen Catalog Number:

AG22030

GenBank Accession Number:

BC052586

GeneID (NCBI):

91607

UNIPROT ID:

Q7Z7L1

Full Name:

schlafen family member 11

Calculated MW:

901 aa, 103 kDa

Observed MW:

103 kDa

Purification Method:

Antigen affinity purification

Recommended Dilutions:

WB 1:1000-1:6000

IP 0.5-4.0 ug for 1.0-3.0 mg of total protein lysate

IHC 1:50-1:500

IF/ICC 1:50-1:500

Applications

Tested Applications:

WB, IHC, IF/ICC, IP, ELISA

Cited Applications:

WB

Species Specificity:

human

Cited Species:

human

Note-IHC: suggested antigen retrieval with TE buffer pH 9.0; (*) Alternatively, antigen retrieval may be performed with citrate buffer pH 6.0

Positive Controls:

WB : DU 145 cells, HEK-293 cells, Jurkat cells

IP : HEK-293 cells,

IHC : human ovary cancer tissue,

IF/ICC : A431 cells,

Background Information

Notable Publications

Author	Pubmed ID	Journal	Application
Pandiyaraj Kanagavalli	39626816	Int J Biol Macromol	WB

Storage

Storage:

Store at -20°C. Stable for one year after shipment.

Storage Buffer:

PBS with 0.02% sodium azide and 50% glycerol pH 7.3.

Aliquoting is unnecessary for -20°C storage

For technical support and original validation data for this product please contact:

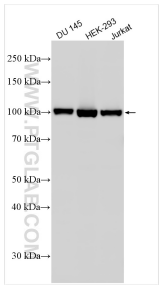
T: 4006900926

E: Proteintech-CN@ptglab.com

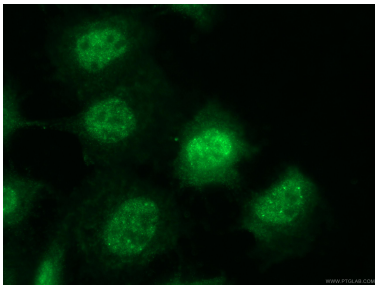
W: ptgcn.com

This product is exclusively available under Proteintech Group brand and is not available to purchase from any other manufacturer.

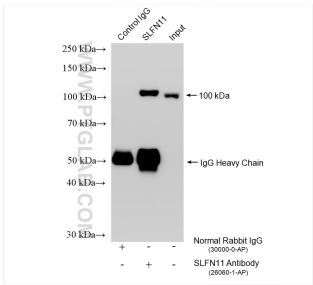
Selected Validation Data



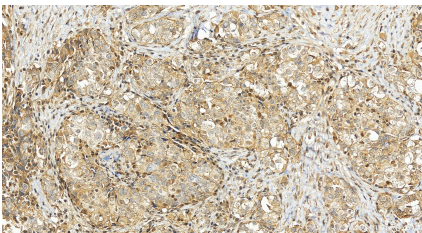
Various lysates were subjected to SDS PAGE followed by western blot with 26060-1-AP (SLFN11 antibody) at dilution of 1:3000 incubated at room temperature for 1.5 hours.



Immunofluorescent analysis of (4% PFA) fixed A431 cells using 26060-1-AP (SLFN11 antibody), at dilution of 1:200 and CoraLite®488-Conjugated AffiniPure Goat Anti-Rabbit IgG(H+L).



IP result of anti-SLFN11 (IP:26060-1-AP, 4ug; Detection:26060-1-AP 1:800) with HEK-293 cells lysate 1610 ug.



Immunohistochemical analysis of paraffin-embedded human ovary cancer tissue slide using 26060-1-AP (SLFN11 antibody) at dilution of 1:200 (under 20x lens). Heat mediated antigen retrieval with Tris-EDTA buffer (pH 9.0).