

For Research Use Only

SLC19A1 Polyclonal antibody

Catalog Number: 25958-1-AP

Featured Product

3 Publications



Basic Information

Catalog Number:

25958-1-AP

Size:

300 µg/ml

Source:

Rabbit

Isotype:

IgG

Immunogen Catalog Number:

AG22921

GenBank Accession Number:

BC003068

GeneID (NCBI):

6573

UNIPROT ID:

P41440

Full Name:

solute carrier family 19 (folate transporter), member 1

Calculated MW:

591 aa, 65 kDa

Observed MW:

46 kDa

Purification Method:

Antigen affinity purification

Recommended Dilutions:

WB 1:500-1:2000

IHC 1:50-1:500

Applications

Tested Applications:

WB, IHC, ELISA

Cited Applications:

WB

Species Specificity:

human, mouse

Cited Species:

human, mouse

Note-IHC: suggested antigen retrieval with TE buffer pH 9.0; (*) Alternatively, antigen retrieval may be performed with citrate buffer pH 6.0

Positive Controls:

WB : HepG2 cells, LNCaP cells

IHC : human placenta tissue, mouse cerebellum tissue

Background Information

SLC19A1, also named as RFC (reduced folate carrier), is an anionic exchanger that involved in the regulation of intracellular concentrations of folate in exchange for anions. The predicted MW of SLC19A1 is 65 kDa and 25958-1-AP antibody recognizes the 46 kDa protein which is similar to papers. The 38-40 kDa minor forms and 58 kDa form have also been reported that could be alternate splicing, post-transcriptional modification or the role of accessory proteins. (PMID: 17404734, 9111015)

Notable Publications

Author	Pubmed ID	Journal	Application
Xiaobo Li	34905508	J Clin Invest	WB
Yingjie Hou	34478637	Cell Chem Biol	WB
Yu Deng	39413198	Sci Adv	WB

Storage

Storage:

Store at -20°C. Stable for one year after shipment.

Storage Buffer:

PBS with 0.02% sodium azide and 50% glycerol pH 7.3.

Aliquoting is unnecessary for -20°C storage

For technical support and original validation data for this product please contact:

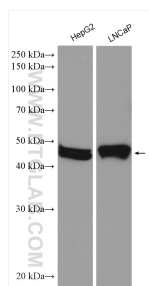
T: 4006900926

E: Proteintech-CN@ptglab.com

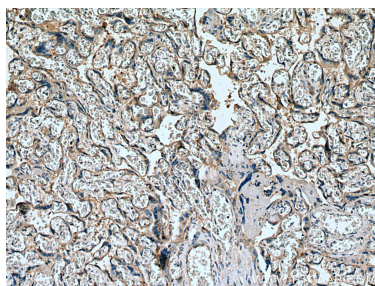
W: ptgcn.com

This product is exclusively available under Proteintech Group brand and is not available to purchase from any other manufacturer.

Selected Validation Data



Various lysates were subjected to SDS PAGE followed by western blot with 25958-1-AP (SLC19A1 antibody) at dilution of 1:1000 incubated at room temperature for 1.5 hours.



Immunohistochemical analysis of paraffin-embedded human placenta tissue slide using 25958-1-AP (SLC19A1 antibody) at dilution of 1:200 (under 10x lens). Heat mediated antigen retrieval with Tris-EDTA buffer (pH 9.0).