

C11orf80 Polyclonal antibody

Catalog Number: 25957-1-AP

Basic Information

Catalog Number:

25957-1-AP

Size:

350 µg/ml

Source:

Rabbit

Isotype:

IgG

Immunogen Catalog Number:

AG22895

GenBank Accession Number:

BC028240

GeneID (NCBI):

79703

UNIPROT ID:

Q8N6T0

Full Name:

chromosome 11 open reading frame
80

Calculated MW:

522 aa, 58 kDa

Observed MW:

70-75 kDa

Purification Method:

Antigen affinity purification

Recommended Dilutions:

WB 1:500-1:1000

IHC 1:20-1:200

Applications

Tested Applications:

IHC, WB, ELISA

Species Specificity:

human

Note-IHC: suggested antigen retrieval with **TE buffer pH 9.0; (*) Alternatively, antigen retrieval may be performed with citrate buffer pH 6.0**

Positive Controls:

WB : L02 cells,

IHC : human pancreas tissue, human liver tissue

Background Information

C11orf80 locates at the chromosome 11. It has two isoforms with MW 70-75 kDa.

Storage

Storage:

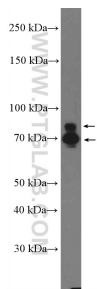
Store at -20°C. Stable for one year after shipment.

Storage Buffer:

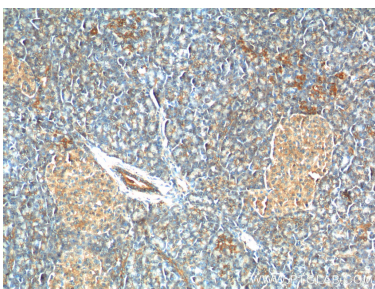
PBS with 0.02% sodium azide and 50% glycerol pH 7.3.

Aliquoting is unnecessary for -20°C storage

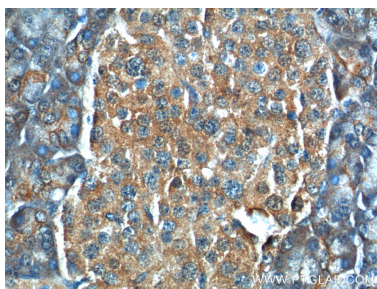
Selected Validation Data



L02 cells were subjected to SDS PAGE followed by western blot with 25957-1-AP (C11orf80 Antibody) at dilution of 1:600 incubated at room temperature for 1.5 hours.



Immunohistochemical analysis of paraffin-embedded human pancreas tissue slide using 25957-1-AP (C11orf80 Antibody) at dilution of 1:200 (under 10x lens).



Immunohistochemical analysis of paraffin-embedded human pancreas tissue slide using 25957-1-AP (C11orf80 Antibody) at dilution of 1:200 (under 40x lens).