

For Research Use Only

SNW1 Polyclonal antibody

Catalog Number: 25926-1-AP

Featured Product

4 Publications



Basic Information

Catalog Number:

25926-1-AP

Size:

450 µg/ml

Source:

Rabbit

Isotype:

IgG

Immunogen Catalog Number:

AG23106

GenBank Accession Number:

BC108903

GeneID (NCBI):

22938

UNIPROT ID:

Q13573

Full Name:

SNW domain containing 1

Calculated MW:

536 aa, 61 kDa

Observed MW:

62-69 kDa

Purification Method:

Antigen affinity purification

Recommended Dilutions:

WB 1:500-1:1000

IHC 1:150-1:600

IF/ICC 1:50-1:500

Applications

Tested Applications:

WB, IHC, IF/ICC, ELISA

Cited Applications:

WB

Species Specificity:

human

Cited Species:

human, mouse

Note-IHC: suggested antigen retrieval with TE buffer pH 9.0; (*) Alternatively, antigen retrieval may be performed with citrate buffer pH 6.0

Positive Controls:

WB : MCF-7 cells, HepG2 cells

IHC : human prostate cancer tissue,

IF/ICC : HepG2 cells,

Background Information

Notable Publications

Author	Pubmed ID	Journal	Application
Shuai Hou	31216022	Nucleic Acids Res	WB
Sofie De Munter	28032891	FEBS Lett	WB
Qiao Zhang	32805409	Microbes Infect	WB

Storage

Storage:

Store at -20°C. Stable for one year after shipment.

Storage Buffer:

PBS with 0.02% sodium azide and 50% glycerol pH 7.3.

Aliquoting is unnecessary for -20°C storage

For technical support and original validation data for this product please contact:

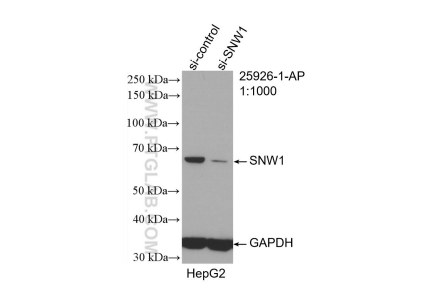
T: 4006900926

E: Proteintech-CN@ptglab.com

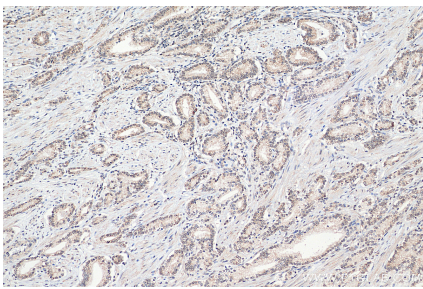
W: ptgcn.com

This product is exclusively available under Proteintech Group brand and is not available to purchase from any other manufacturer.

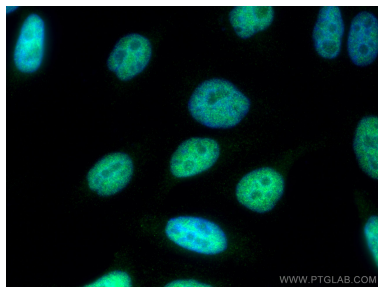
Selected Validation Data



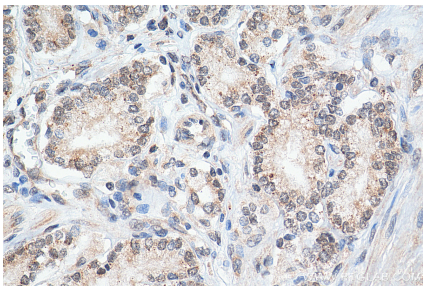
WB result of SNW1 antibody (25926-1-AP; 1:1000; incubated at room temperature for 1.5 hours) with sh-Control and sh-SNW1 transfected HepG2 cells.



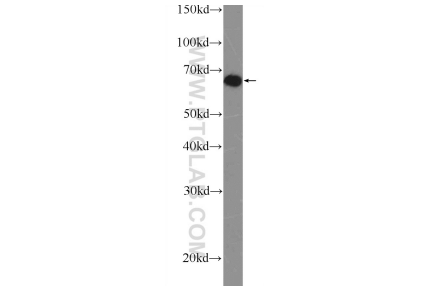
Immunohistochemical analysis of paraffin-embedded human prostate cancer tissue slide using 25926-1-AP (SNW1 antibody) at dilution of 1:300 (under 10x lens). Heat mediated antigen retrieval with Tris-EDTA buffer (pH 9.0).



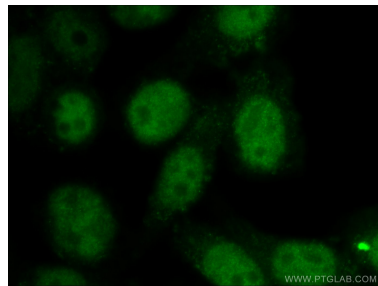
Immunofluorescent analysis of (4% PFA) fixed HepG2 cells using SNW1 antibody (25926-1-AP) at dilution of 1:200 and CoraLite®488-Conjugated AffiniPure Goat Anti-Rabbit IgG(H+L), CL594-Phalloidin (red).



Immunohistochemical analysis of paraffin-embedded human prostate cancer tissue slide using 25926-1-AP (SNW1 antibody) at dilution of 1:300 (under 40x lens). Heat mediated antigen retrieval with Tris-EDTA buffer (pH 9.0).



MCF-7 cells were subjected to SDS PAGE followed by western blot with 25926-1-AP (SNW1 Antibody) at dilution of 1:600 incubated at room temperature for 1.5 hours.



Immunofluorescent analysis of HepG2 cells using 25926-1-AP (SNW1 antibody) at dilution of 1:25 and Alexa Fluor 488-conjugated AffiniPure Goat Anti-Rabbit IgG(H+L).