

For Research Use Only

FOXJ1 Polyclonal antibody, PBS Only

Catalog Number: 25903-1-PBS



Basic Information

Catalog Number:

25903-1-PBS

Size:

1 mg/ml

Source:

Rabbit

Isotype:

IgG

Immunogen Catalog Number:

AG20827

GenBank Accession Number:

BC046460

GeneID (NCBI):

2302

UNIPROT ID:

Q92949

Full Name:

forkhead box J1

Calculated MW:

45 kDa

Observed MW:

50 kDa

Purification Method:

Antigen affinity purification

Applications

Tested Applications:

WB, IHC, Indirect ELISA

Species Specificity:

human, mouse, rat

Background Information

FOXJ1 (Forkhead box protein J1) acts by activating the transcription of genes mediating motile cilia's assembly, such as CFAP157. It binds the DNA consensus sequences 5'-HWDGTGTTGTTTA-3' or 5'-KTTGTTGTTKWTW-3' (where H is not G, W is A or T, D is not C, and K is G or T), and activates the transcription of a variety of ciliary proteins in the developing brain and lung (PMID: 31630787).

Storage

Storage:

Store at -80°C.

The product is shipped with ice packs. Upon receipt, store it immediately at -80°C

Storage Buffer:

PBS Only

For technical support and original validation data for this product please contact:

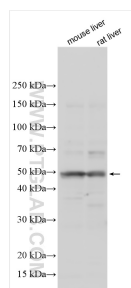
T: 4006900926

E: Proteintech-CN@ptglab.com

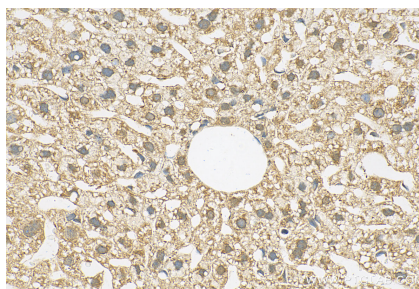
W: ptgcn.com

This product is exclusively available under Proteintech Group brand and is not available to purchase from any other manufacturer.

Selected Validation Data



Various lysates were subjected to SDS PAGE followed by western blot with 25903-1-AP (FOXJ1 antibody) at dilution of 1:2500 incubated at room temperature for 1.5 hours. This data was developed using the same antibody clone with 25903-1-PBS in a different storage buffer formulation.



Immunohistochemical analysis of paraffin-embedded mouse liver tissue slide using 25903-1-AP (FOXJ1 antibody) at dilution of 1:400 (under 40x lens). Heat mediated antigen retrieval with Tris-EDTA buffer (pH 9.0). This data was developed using the same antibody clone with 25903-1-PBS in a different storage buffer formulation.