

For Research Use Only

# KIF5C Polyclonal antibody, PBS Only

Catalog Number: 25897-1-PBS

Featured Product



## Basic Information

Catalog Number:

25897-1-PBS

Size:

1 mg/ml

Source:

Rabbit

Isotype:

IgG

Immunogen Catalog Number:

AG23163

GenBank Accession Number:

BC110287

GeneID (NCBI):

3800

UNIPROT ID:

O60282

Full Name:

kinesin family member 5C

Calculated MW:

725 aa, 83 kDa

Observed MW:

70 kDa, 110 kDa

Purification Method:

Antigen affinity purification

## Applications

Tested Applications:

WB, IHC, IF/ICC, IP, Indirect ELISA

Species Specificity:

human, mouse, rat

## Background Information

KIF5C (Kinesin heavy chain isoform 5C variant) which belongs to the kinesin-like protein family is neuron specific. The kinesin-1 subfamilies (kif5a, kif5b, kif5c) are responsible for the movement of mitochondria in neurons. Kinesins have N-terminal motor domains and C-terminal cargo-binding tail domains separated by hinge regions. The hinge and C-terminal tail regions of Kif5a, Kif5b, and Kif5c bound a large detergent-resistant RNase-sensitive granule. The granule localized to dendrites and underwent bidirectional movement. Distally directed movement of the granule was enhanced by Kif5 overexpression and reduced by Kif5 functional blockage. kinesins may transport RNA in dendrites via this large granule. Two major isoforms of kif5c, with molecular predicted masses of 80 and 110 kDa, are generated by alternative splicing.

## Storage

Storage:

Store at -80°C.

The product is shipped with ice packs. Upon receipt, store it immediately at -80°C

Storage Buffer:

PBS Only

For technical support and original validation data for this product please contact:

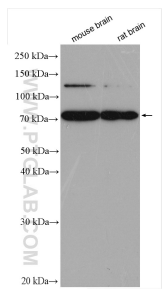
T: 4006900926

E: [Proteintech-CN@ptglab.com](mailto:Proteintech-CN@ptglab.com)

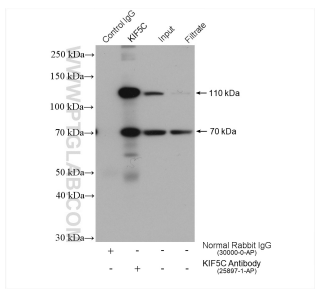
W: [ptgcn.com](http://ptgcn.com)

This product is exclusively available under Proteintech Group brand and is not available to purchase from any other manufacturer.

Selected Validation Data



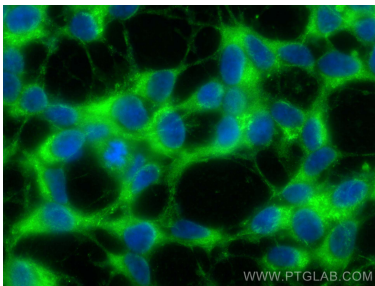
mouse brain tissue were subjected to SDS PAGE followed by western blot with 25897-1-AP (KIF5C antibody) at dilution of 1:4000 incubated at room temperature for 1.5 hours. This data was developed using the same antibody clone with 25897-1-PBS in a different storage buffer formulation.



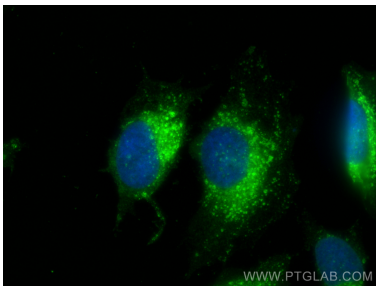
IP result of anti-KIF5C (IP:25897-1-AP, 4ug; Detection:25897-1-AP 1:800) with mouse brain tissue lysate 2080 ug. This data was developed using the same antibody clone with 25897-1-PBS in a different storage buffer formulation.



Immunohistochemical analysis of paraffin-embedded mouse brain tissue slide using 25897-1-AP (KIF5C antibody) at dilution of 1:200 (under 10x lens). Heat mediated antigen retrieval with Tris-EDTA buffer (pH 9.0). This data was developed using the same antibody clone with 25897-1-PBS in a different storage buffer formulation.



Immunofluorescent analysis of (-20°C Ethanol) fixed SH-SY5Y cells using KIF5C antibody (25897-1-AP) at dilution of 1:400 and CoraLite®488-Conjugated AffiniPure Goat Anti-Rabbit IgG(H+L) (SA00013-2). This data was developed using the same antibody clone with 25897-1-PBS in a different storage buffer formulation.



Immunofluorescent analysis of (4% PFA) fixed HeLa cells using KIF5C antibody (25897-1-AP) at dilution of 1:200 and CoraLite®488-Conjugated Goat Anti-Rabbit IgG(H+L) (SA00013-2). This data was developed using the same antibody clone with 25897-1-PBS in a different storage buffer formulation.