

For Research Use Only

LIPF Polyclonal antibody

Catalog Number: 25889-1-AP



Basic Information

Catalog Number:

25889-1-AP

Size:

200 µg/ml

Source:

Rabbit

Isotype:

IgG

Immunogen Catalog Number:

AG23149

GenBank Accession Number:

BC112272

GeneID (NCBI):

8513

UNIPROT ID:

P07098

Full Name:

lipase, gastric

Observed MW:

49 kDa

Purification Method:

Antigen affinity purification

Recommended Dilutions:

WB 1:200-1:1000

IHC 1:50-1:500

Applications

Tested Applications:

IHC, WB, ELISA

Species Specificity:

human, mouse

Note-IHC: suggested antigen retrieval with TE buffer pH 9.0; (*) Alternatively, antigen retrieval may be performed with citrate buffer pH 6.0

Positive Controls:

WB: MKN-45 cells, mouse stomach tissue

IHC: human stomach tissue, human liver tissue

Background Information

Storage

Storage:

Store at -20°C. Stable for one year after shipment.

Storage Buffer:

PBS with 0.02% sodium azide and 50% glycerol pH 7.3.

Aliquoting is unnecessary for -20°C storage

For technical support and original validation data for this product please contact:

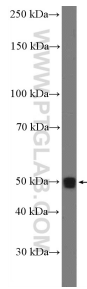
T: 4006900926

E: Proteintech-CN@ptglab.com

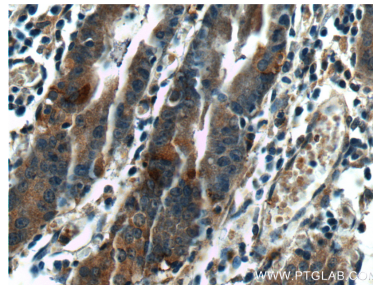
W: ptgcn.com

This product is exclusively available under Proteintech Group brand and is not available to purchase from any other manufacturer.

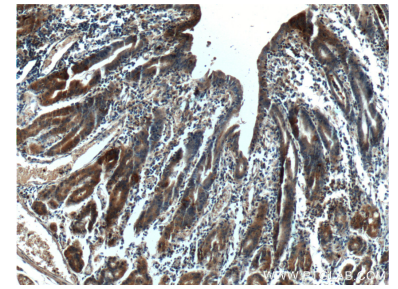
Selected Validation Data



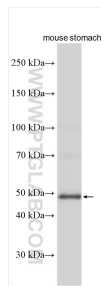
MKN-45 cells were subjected to SDS PAGE followed by western blot with 25889-1-AP (LIPF Antibody) at dilution of 1:300 incubated at room temperature for 1.5 hours.



Immunohistochemical analysis of paraffin-embedded human stomach tissue slide using 25889-1-AP (LIPF Antibody) at dilution of 1:200 (under 40x lens).



Immunohistochemical analysis of paraffin-embedded human stomach tissue slide using 25889-1-AP (LIPF Antibody) at dilution of 1:200 (under 10x lens).



Various lysates were subjected to SDS PAGE followed by western blot with 25889-1-AP (LIPF antibody) at dilution of 1:500 incubated at room temperature for 1.5 hours.