

For Research Use Only

LY6G6F Polyclonal antibody

Catalog Number: 25872-1-AP **1 Publications**



Basic Information

Catalog Number: 25872-1-AP	GenBank Accession Number: BC137212	Purification Method: Antigen affinity purification
Size: 900 µg/ml	GeneID (NCBI): 259215	Recommended Dilutions: WB 1:500-1:2000
Source: Rabbit	UNIPROT ID: Q55Q64	
Isotype: IgG	Full Name: lymphocyte antigen 6 complex, locus G6F	
Immunogen Catalog Number: AG22467	Calculated MW: 297 aa, 32 kDa	
	Observed MW: 60 kDa	

Applications

Tested Applications: WB, ELISA	Positive Controls: WB : HepG2 cells, HL-60 cells
Cited Applications: IF	
Species Specificity: human	
Cited Species: mouse	

Background Information

LY6G6F, also named as C6orf21, G6F, LY6G6D and NG32, plays a role in the downstream signal transduction pathways involving GRB2 and GRB7. It has monomer (~30 kDa) and homodimer (~60 kDa).

Notable Publications

Author	Pubmed ID	Journal	Application
Wuwei Rong	35387479	Arterioscler Thromb Vasc Biol	IF

Storage

Storage:
Store at -20°C. Stable for one year after shipment.
Storage Buffer:
PBS with 0.02% sodium azide and 50% glycerol pH 7.3.
Aliquoting is unnecessary for -20°C storage

For technical support and original validation data for this product please contact:

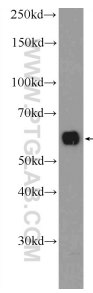
T: 4006900926

E: Proteintech-CN@ptglab.com

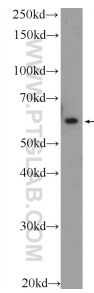
W: ptgcn.com

This product is exclusively available under Proteintech Group brand and is not available to purchase from any other manufacturer.

Selected Validation Data



HepG2 cells were subjected to SDS PAGE followed by western blot with 25872-1-AP (LY6G6F Antibody) at dilution of 1:1000 incubated at room temperature for 1.5 hours.



HL-60 cells were subjected to SDS PAGE followed by western blot with 25872-1-AP (LY6G6F Antibody) at dilution of 1:1000 incubated at room temperature for 1.5 hours.