

For Research Use Only

C21orf45 Polyclonal antibody

Catalog Number: 25832-1-AP **1 Publications**



Basic Information

Catalog Number:

25832-1-AP

Size:

350 µg/ml

Source:

Rabbit

Isotype:

IgG

Immunogen Catalog Number:

AG22922

GenBank Accession Number:

BC042917

GeneID (NCBI):

54069

UNIPROT ID:

Q9NYP9

Full Name:

chromosome 21 open reading frame

45

Calculated MW:

233 aa, 26 kDa

Observed MW:

105 kDa

Purification Method:

Antigen affinity purification

Recommended Dilutions:

WB 1:200-1:1000

IF 1:20-1:200

Applications

Tested Applications:

IF/ICC, WB, ELISA

Cited Applications:

WB, IF

Species Specificity:

human, mouse

Cited Species:

human, mouse

Positive Controls:

WB : HeLa cells,

IF : HeLa cells,

Background Information

C21orf45, also named as MIS18A, C21orf46 and FASP1, is required for recruitment of CENPA to centromeres and normal chromosome segregation during mitosis. C21orf45 has dimer (~52 kDa) and heterodimer (~105 kDa) forms.

Notable Publications

Author	Pubmed ID	Journal	Application
Shi-Yue Sun	33645631	Br J Pharmacol	IF, WB

Storage

Storage:

Store at -20°C. Stable for one year after shipment.

Storage Buffer:

PBS with 0.02% sodium azide and 50% glycerol pH 7.3.

Aliquoting is unnecessary for -20°C storage

For technical support and original validation data for this product please contact:

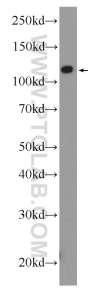
T: 4006900926

E: Proteintech-CN@ptglab.com

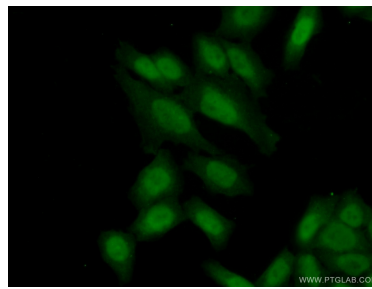
W: ptgcn.com

This product is exclusively available under Proteintech Group brand and is not available to purchase from any other manufacturer.

Selected Validation Data



HeLa cells were subjected to SDS PAGE followed by western blot with 25832-1-AP (C21orf45 Antibody) at dilution of 1:300 incubated at room temperature for 1.5 hours.



Immunofluorescent analysis of (10% Formaldehyde) fixed HeLa cells using 25832-1-AP (C21orf45 antibody) at dilution of 1:50 and Alexa Fluor 488-conjugated AffiniPure Goat Anti-Rabbit IgG(H+L).