

For Research Use Only

# CCDC33 Polyclonal antibody, PBS Only

Catalog Number: 25822-1-PBS



## Basic Information

<b>Catalog Number:</b> 25822-1-PBS	<b>GenBank Accession Number:</b> BC025689	<b>Purification Method:</b> Antigen affinity purification
<b>Concentration:</b> 1 mg/ml	<b>GeneID (NCBI):</b> 80125	
<b>Source:</b> Rabbit	<b>UNIPROT ID:</b> Q8N5R6	
<b>Isotype:</b> IgG	<b>Full Name:</b> coiled-coil domain containing 33	
<b>Immunogen Catalog Number:</b> AG22893	<b>Calculated MW:</b> 958 aa, 107 kDa	
	<b>Observed MW:</b> 85 kDa	

## Applications

**Tested Applications:**  
WB, IP, Indirect ELISA

**Species Specificity:**  
human, mouse, rat

## Background Information

The human CCDC33 gene was reported to encode a cancer/testis (CT) antigen, which is located on 15q24.1, spans a region of 99.8 kb, and consists of 20 exons (PMID: 28639886). CCDC33 is predominantly expressed in the testis and undergoes alternative splicing to produce at least 5 different transcripts (37kda, 41kda, 85kda, 107kda, 114kda). Human CCDC33 was reported to be a cancer/testis (CT) protein. Abundant expression of Ccdc33 is evident during mouse spermatogenesis (PMID: 33942254).

## Storage

**Storage:**  
Store at -80°C.  
**The product is shipped with ice packs. Upon receipt, store it immediately at -80°C**  
**Storage Buffer:**  
PBS only

For technical support and original validation data for this product please contact:

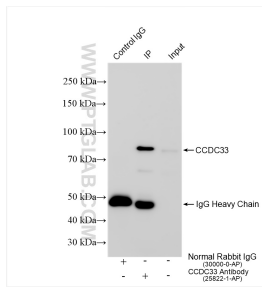
T: 4006900926

E: [Proteintech-CN@ptglab.com](mailto:Proteintech-CN@ptglab.com)

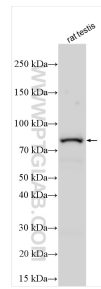
W: [ptgcn.com](http://ptgcn.com)

**This product is exclusively available under Proteintech Group brand and is not available to purchase from any other manufacturer.**

## Selected Validation Data



IP result of anti-CCDC33 (IP:25822-1-AP, 4 $\mu$ g; Detection:25822-1-AP 1:600) with mouse testis tissue lysate 1800  $\mu$ g. This data was developed using the same antibody clone with 25822-1-PBS in a different storage buffer formulation.



Various lysates were subjected to SDS PAGE followed by western blot with 25822-1-AP (CCDC33 antibody) at dilution of 1:1000 incubated at room temperature for 1.5 hours. This data was developed using the same antibody clone with 25822-1-PBS in a different storage buffer formulation.