

For Research Use Only

CCDC33 Polyclonal antibody

Catalog Number: 25822-1-AP



Basic Information

Catalog Number:

25822-1-AP

Concentration:

400 ug/ml

Source:

Rabbit

Isotype:

IgG

Immunogen Catalog Number:

AG22893

GenBank Accession Number:

BC025689

GeneID (NCBI):

80125

UNIPROT ID:

Q8N5R6

Full Name:

coiled-coil domain containing 33

Calculated MW:

958 aa, 107 kDa

Observed MW:

85 kDa

Purification Method:

Antigen affinity purification

Recommended Dilutions:

WB 1:500-1:2000

IP 0.5-4.0 ug for 1.0-3.0 mg of total protein lysate

Applications

Tested Applications:

WB, IP, ELISA

Species Specificity:

human, mouse, rat

Positive Controls:

WB : rat testis tissue,

IP : mouse testis tissue,

Background Information

The human CCDC33 gene was reported to encode a cancer/testis (CT) antigen, which is located on 15q24.1, spans a region of 99.8 kb, and consists of 20 exons (PMID: 28639886). CCDC33 is predominantly expressed in the testis and undergoes alternative splicing to produce at least 5 different transcripts (37kda, 41kda, 85kda, 107kda, 114kda). Human CCDC33 was reported to be a cancer/testis (CT) protein. Abundant expression of Ccdc33 is evident during mouse spermatogenesis (PMID: 33942254).

Storage

Storage:

Store at -20°C. Stable for one year after shipment.

Storage Buffer:

PBS with 0.02% sodium azide and 50% glycerol

Aliquoting is unnecessary for -20°C storage

For technical support and original validation data for this product please contact:

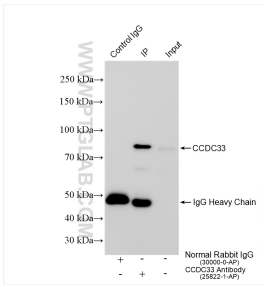
T: 4006900926

E: Proteintech-CN@ptglab.com

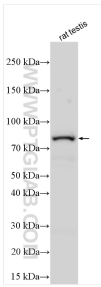
W: ptgcn.com

This product is exclusively available under Proteintech Group brand and is not available to purchase from any other manufacturer.

Selected Validation Data



IP result of anti-CCDC33 (IP:25822-1-AP, 4ug; Detection:25822-1-AP 1:600) with mouse testis tissue lysate 1800 ug.



Various lysates were subjected to SDS PAGE followed by western blot with 25822-1-AP (CCDC33 antibody) at dilution of 1:1000 incubated at room temperature for 1.5 hours.