

For Research Use Only

# DIS3L2 Polyclonal antibody

Catalog Number: 25792-1-AP **1 Publications**



## Basic Information

<b>Catalog Number:</b> 25792-1-AP	<b>GenBank Accession Number:</b> BC030113	<b>Purification Method:</b> Antigen affinity purification
<b>Size:</b> 400 µg/ml	<b>GeneID (NCBI):</b> 129563	<b>Recommended Dilutions:</b> WB 1:500-1:1000 IHC 1:100-1:400
<b>Source:</b> Rabbit	<b>UNIPROT ID:</b> Q8IYB7	
<b>Isotype:</b> IgG	<b>Full Name:</b> DIS3 mitotic control homolog (S. cerevisiae)-like 2	
<b>Immunogen Catalog Number:</b> AG22963	<b>Calculated MW:</b> 885 aa, 99 kDa	
	<b>Observed MW:</b> 65 kDa, 99 kDa	

## Applications

<b>Tested Applications:</b> IHC, WB, ELISA	<b>Positive Controls:</b> WB : HepG2 cells, mouse embryo tissue IHC : human testis tissue,
<b>Cited Applications:</b> WB	
<b>Species Specificity:</b> human, mouse	
<b>Cited Species:</b> human	

**Note-IHC: suggested antigen retrieval with TE buffer pH 9.0; (\*) Alternatively, antigen retrieval may be performed with citrate buffer pH 6.0**

## Background Information

DIS3L2 encodes a protein of 885 amino acids with a predicted molecular weight of 99.3 kDa.

## Notable Publications

Author	Pubmed ID	Journal	Application
Tobias Moll	36241425	Life Sci Alliance	WB

## Storage

**Storage:**  
Store at -20°C. Stable for one year after shipment.  
**Storage Buffer:**  
PBS with 0.02% sodium azide and 50% glycerol pH 7.3.  
Aliquoting is unnecessary for -20°C storage

For technical support and original validation data for this product please contact:

T: 4006900926

E: Proteintech-CN@ptglab.com

W: ptgcn.com

**This product is exclusively available under Proteintech Group brand and is not available to purchase from any other manufacturer.**

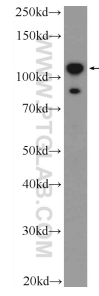
## Selected Validation Data



Immunohistochemical analysis of paraffin-embedded human testis tissue slide using 25792-1-AP (DIS3L2 antibody) at dilution of 1:200 (under 10x lens).



Immunohistochemical analysis of paraffin-embedded human testis tissue slide using 25792-1-AP (DIS3L2 antibody) at dilution of 1:200 (under 40x lens).



HepG2 cells were subjected to SDS PAGE followed by western blot with 25792-1-AP (DIS3L2 Antibody) at dilution of 1:600 incubated at room temperature for 1.5 hours.