

For Research Use Only

# COX20 Polyclonal antibody

Catalog Number: 25752-1-AP

5 Publications



## Basic Information

Catalog Number:

25752-1-AP

Size:

750 ug/ml

Source:

Rabbit

Isotype:

IgG

Immunogen Catalog Number:

AG22520

GenBank Accession Number:

BC018519

GeneID (NCBI):

116228

UNIPROT ID:

Q5RI15

Full Name:

family with sequence similarity 36, member A

Calculated MW:

118 aa, 13 kDa

Observed MW:

~16 kDa

Purification Method:

Antigen affinity purification

Recommended Dilutions:

WB 1:500-1:2000

IHC 1:20-1:200

IF/ICC 1:200-1:800

## Applications

Tested Applications:

WB, IHC, IF/ICC, ELISA

Cited Applications:

WB, IHC, IF

Species Specificity:

human

Cited Species:

human, mouse

**Note-IHC: suggested antigen retrieval with TE buffer pH 9.0; (\*) Alternatively, antigen retrieval may be performed with citrate buffer pH 6.0**

Positive Controls:

WB : PC-3 cells,

IHC : human prostate cancer tissue, human endometrial cancer tissue

IF/ICC : HeLa cells, PC-3 cells

## Background Information

COX20, also name as FAM36A, belongs to the COX20 family. Mutations in COX20 are a novel cause of recessively inherited.

## Notable Publications

Author	Pubmed ID	Journal	Application
Sridevi Challa	34314702	Cell	WB,IF
Shin-Haw Lee	33262348	Sci Data	WB,IF
Ziyang Wang	39565874	Sci Transl Med	WB

## Storage

Storage:

Store at -20°C. Stable for one year after shipment.

Storage Buffer:

PBS with 0.02% sodium azide and 50% glycerol pH 7.3.

Aliquoting is unnecessary for -20°C storage

For technical support and original validation data for this product please contact:

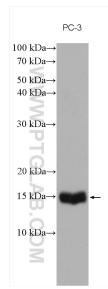
T: 4006900926

E: [Proteintech-CN@ptglab.com](mailto:Proteintech-CN@ptglab.com)

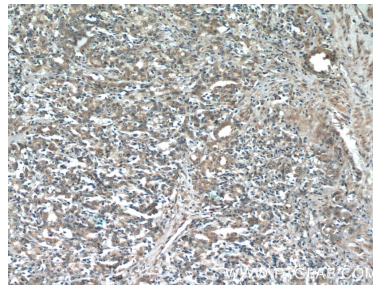
W: [ptgcn.com](http://ptgcn.com)

This product is exclusively available under Proteintech Group brand and is not available to purchase from any other manufacturer.

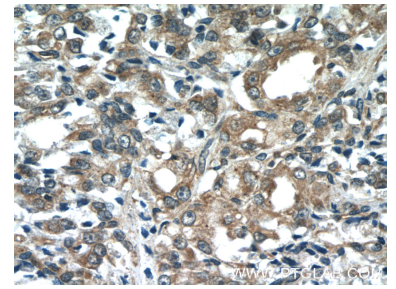
## Selected Validation Data



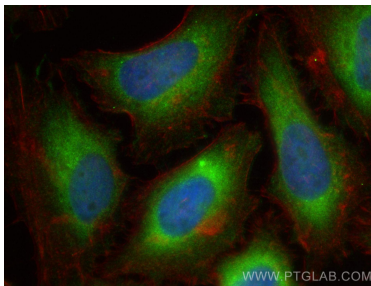
PC-3 cells were subjected to SDS PAGE followed by western blot with 25752-1-AP (COX20 antibody) at dilution of 1:1000 incubated at room temperature for 1.5 hours.



Immunohistochemical analysis of paraffin-embedded human prostate cancer tissue slide using 25752-1-AP (COX20 antibody at dilution of 1:50 (under 10x lens).



Immunohistochemical analysis of paraffin-embedded human prostate cancer tissue slide using 25752-1-AP (COX20 antibody at dilution of 1:50 (under 40x lens).



Immunofluorescent analysis of (-20°C Ethanol) fixed HeLa cells using COX20 antibody (25752-1-AP) at dilution of 1:400 and Multi-rAb CoraLite® Plus 488-Goat Anti-Rabbit Recombinant Secondary Antibody (H+L) (RGAR002), CL594-Phalloidin (red).