

For Research Use Only

RAPH1 Polyclonal antibody

Catalog Number: 25750-1-AP



Basic Information

Catalog Number:

25750-1-AP

Size:

700 µg/ml

Source:

Rabbit

Isotype:

IgG

Immunogen Catalog Number:

AG22705

GenBank Accession Number:

BC156922

GeneID (NCBI):

65059

UNIPROT ID:

Q70E73

Full Name:

Ras association (RalGDS/AF-6) and pleckstrin homology domains 1

Calculated MW:

1250 aa, 135 kDa

Observed MW:

67 kDa

Purification Method:

Antigen affinity purification

Recommended Dilutions:

WB 1:500-1:1000

IF 1:10-1:100

Applications

Tested Applications:

IF/ICC, WB, ELISA

Species Specificity:

human

Positive Controls:

WB : SKOV-3 cells,

IF : HepG2 cells,

Background Information

RAPH1 encodes the lamellipodin protein (Lpd), which binds to Ena and VASPs to assist in actin cytoskeleton assembly; in this way, the gene plays an important role in cellular motility and lamellipodial protrusion. This protein has 9 isoforms producing different molecular weights of 135 kDa, 67 kDa, 70 kDa, 73 kDa.

Storage

Storage:

Store at -20°C. Stable for one year after shipment.

Storage Buffer:

PBS with 0.02% sodium azide and 50% glycerol pH 7.3.

Aliquoting is unnecessary for -20°C storage

For technical support and original validation data for this product please contact:

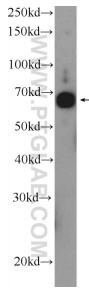
T: 4006900926

E: Proteintech-CN@ptglab.com

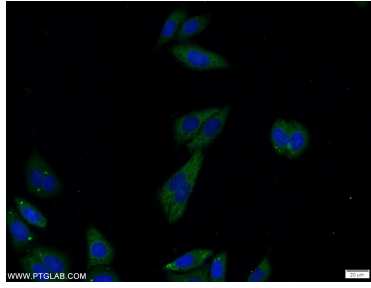
W: ptgcn.com

This product is exclusively available under Proteintech Group brand and is not available to purchase from any other manufacturer.

Selected Validation Data



SKOV-3 cells were subjected to SDS PAGE followed by western blot with 25750-1-AP (RAPH1 Antibody) at dilution of 1:600 incubated at room temperature for 1.5 hours.



Immunofluorescent analysis of HepG2 cells using 25750-1-AP (RAPH1 antibody) at dilution of 1:25 and Alexa Fluor 488-conjugated AffiniPure Goat Anti-Rabbit IgG(H+L).