

For Research Use Only

# MARVELD3 Polyclonal antibody

Catalog Number: 25667-1-AP **2 Publications**



## Basic Information

<b>Catalog Number:</b> 25667-1-AP	<b>GenBank Accession Number:</b> BC013376	<b>Purification Method:</b> Antigen affinity purification
<b>Size:</b> 900 µg/ml	<b>GeneID (NCBI):</b> 91862	<b>Recommended Dilutions:</b> WB 1:500-1:2000 IHC 1:500-1:2000 IF 1:50-1:500
<b>Source:</b> Rabbit	<b>UNIPROT ID:</b> Q96A59	
<b>Isotype:</b> IgG	<b>Full Name:</b> MARVEL domain containing 3	
<b>Immunogen Catalog Number:</b> AG22492	<b>Calculated MW:</b> 401 aa, 45 kDa	
	<b>Observed MW:</b> 40 kDa	

## Applications

<b>Tested Applications:</b> IF/ICC, IHC, WB, ELISA	<b>Positive Controls:</b> WB : COLO 320 cells, IHC : human kidney tissue, IF : Caco-2 cells,
<b>Cited Applications:</b> WB	
<b>Species Specificity:</b> human	
<b>Cited Species:</b> human	
<b>Note-IHC: suggested antigen retrieval with TE buffer pH 9.0; (*) Alternatively, antigen retrieval may be performed with citrate buffer pH 6.0</b>	

## Background Information

MARVELD3 (MARVEL domain-containing protein 3), a four-span transmembrane protein of about 40 kDa, is a tight junction-associated transmembrane protein of the occludin family (PMID: 20028514). MARVELD3 functions as a determinant of epithelial paracellular permeability properties. It has been reported that MARVELD3 couples tight junctions to the MEKK1-JNK pathway to regulate cell behavior and survival (PMID: 24567356).

## Notable Publications

Author	Pubmed ID	Journal	Application
Ha-Young Park	36529213	Int J Biol Macromol	WB
Ha-Young Park	36700348	FEBS Open Bio	WB

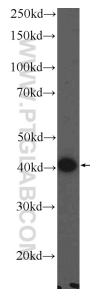
## Storage

**Storage:**  
Store at -20°C. Stable for one year after shipment.  
**Storage Buffer:**  
PBS with 0.02% sodium azide and 50% glycerol pH 7.3.  
Aliquoting is unnecessary for -20°C storage

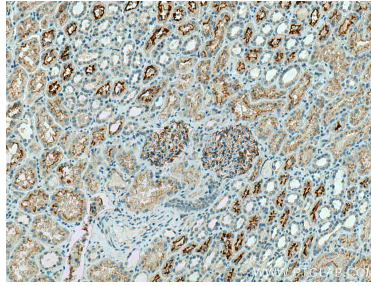
For technical support and original validation data for this product please contact:  
T: 4006900926 E: Proteintech-CN@ptglab.com W: ptgcn.com

**This product is exclusively available under Proteintech Group brand and is not available to purchase from any other manufacturer.**

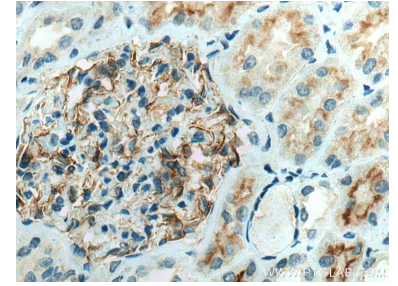
## Selected Validation Data



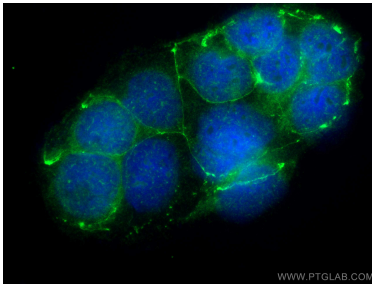
COLO 320 cells were subjected to SDS PAGE followed by western blot with 25667-1-AP (MARVELD3 Antibody) at dilution of 1:1000 incubated at room temperature for 1.5 hours.



Immunohistochemical analysis of paraffin-embedded human kidney tissue slide using 25667-1-AP (MARVELD3 antibody) at dilution of 1:1000 (under 10x lens). Heat mediated antigen retrieval with Tris-EDTA buffer (pH 9.0).



Immunohistochemical analysis of paraffin-embedded human kidney tissue slide using 25667-1-AP (MARVELD3 antibody) at dilution of 1:1000 (under 40x lens). Heat mediated antigen retrieval with Tris-EDTA buffer (pH 9.0).



Immunofluorescent analysis of (-20°C Ethanol) fixed Caco-2 cells using MARVELD3 antibody (25667-1-AP) at dilution of 1:200 and CoraLite®488-Conjugated AffiniPure Goat Anti-Rabbit IgG(H+L).