

PAN3 Polyclonal antibody

Catalog Number: 25655-1-AP

Basic Information

Catalog Number:

25655-1-AP

Size:

450 ug/ml

Source:

Rabbit

Isotype:

IgG

Immunogen Catalog Number:

AG22559

GenBank Accession Number:

BC128180

GeneID (NCBI):

255967

UNIPROT ID:

Q58A45

Full Name:

PAN3 poly(A) specific ribonuclease subunit homolog (S. cerevisiae)

Calculated MW:

887 aa, 96 kDa

Observed MW:

65-68 kDa

Purification Method:

Antigen affinity purification

Recommended Dilutions:

WB 1:1000-1:4000

IHC 1:250-1:1000

Applications

Tested Applications:

WB, IHC, ELISA

Species Specificity:

human, mouse

Positive Controls:

WB : HeLa cells, Jurkat cells, NIH/3T3 cells

IHC : human ovary cancer tissue,

Note-IHC: suggested antigen retrieval with **TE buffer pH 9.0**; (*) Alternatively, antigen retrieval may be performed with **citrate buffer pH 6.0**

Background Information

Shortening of the poly(A) tail in mRNA, called deadenylation, is the first rate-limiting step in mRNA turnover. PAN3 is the regulatory subunit of a cytoplasmic poly(A) nuclease complex that links the catalytic PAN2 subunit to the poly(A)-binding protein PABP, which stimulates PAN2-dependent deadenylation activity (PMID: 14583602). PAN3 has four isoforms, isoform1: 95 kDa; isoform2: 64 kDa, isoform3: 89 kDa and isoform4: 72 kDa. This antibody recognizes isoform2.

Storage

Storage:

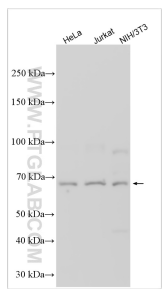
Store at -20°C. Stable for one year after shipment.

Storage Buffer:

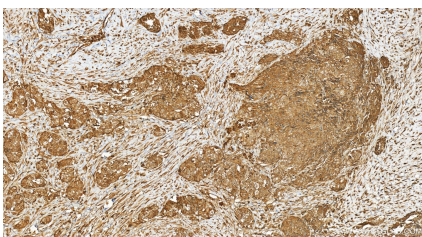
PBS with 0.02% sodium azide and 50% glycerol pH 7.3.

Aliquoting is unnecessary for -20°C storage

Selected Validation Data



Various lysates were subjected to SDS PAGE followed by western blot with 25655-1-AP (PAN3 antibody) at dilution of 1:2000 incubated at room temperature for 1.5 hours.



Immunohistochemical analysis of paraffin-embedded human ovary cancer tissue slide using 25655-1-AP (PAN3 antibody) at dilution of 1:500 (under 20x lens). Heat mediated antigen retrieval with Tris-EDTA buffer (pH 9.0).