

# Mammaglobin A Polyclonal antibody

Catalog Number: 25645-1-AP

## Basic Information

**Catalog Number:**

25645-1-AP

**Size:**

900 µg/ml

**Source:**

Rabbit

**Isotype:**

IgG

**Immunogen Catalog Number:**

AG22324

**GenBank Accession Number:**

BC128252

**GeneID (NCBI):**

4250

**UNIPROT ID:**

Q13296

**Full Name:**

secretoglobin, family 2A, member 2

**Calculated MW:**

93 aa, 10 kDa

**Purification Method:**

Antigen affinity purification

**Recommended Dilutions:**

IHC 1:20-1:200

## Applications

**Tested Applications:**

IHC, ELISA

**Species Specificity:**

human

**Positive Controls:**

IHC : human breast cancer tissue, human breast tissue

**Note-IHC: suggested antigen retrieval with TE buffer pH 9.0; (\*) Alternatively, antigen retrieval may be performed with citrate buffer pH 6.0**

## Background Information

SCGB2A2, also known as mammaglobin A, is a member of the secretoglobin superfamily. It is a breast cancer-associated antigen almost exclusively over-expressed in primary and metastatic human breast cancers, making it a specific molecular marker and a potential therapeutic target for breast cancer. SCGB2A2 is a 93-amino acid protein with a calculated molecular weight of 10.5 kDa.

## Storage

**Storage:**

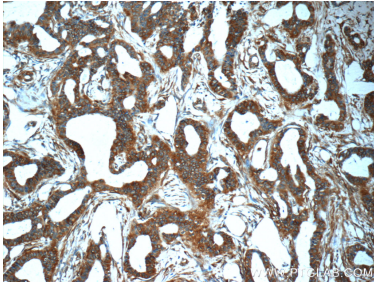
Store at -20°C. Stable for one year after shipment.

**Storage Buffer:**

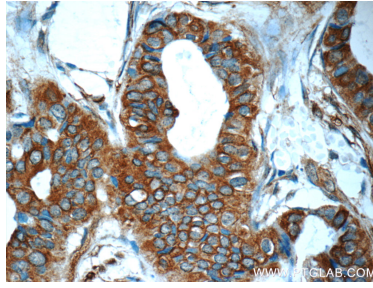
PBS with 0.02% sodium azide and 50% glycerol pH 7.3.

Aliquoting is unnecessary for -20°C storage

## Selected Validation Data



Immunohistochemical analysis of paraffin-embedded human breast cancer tissue slide using 25645-1-AP (Mammaglobin A antibody at dilution of 1:50 (under 10x lens).



Immunohistochemical analysis of paraffin-embedded human breast cancer tissue slide using 25645-1-AP (Mammaglobin A antibody at dilution of 1:50 (under 40x lens).