

BHLHE22 Polyclonal antibody

Catalog Number: 25622-1-AP

2 Publications

Basic Information

Catalog Number:

25622-1-AP

Size:

600 µg/ml

Source:

Rabbit

Isotype:

IgG

Immunogen Catalog Number:

AG20966

GenBank Accession Number:

BC156671

GeneID (NCBI):

27319

UNIPROT ID:

Q8NFJ8

Full Name:

basic helix-loop-helix family,
member e22

Calculated MW:

381 aa, 37 kDa

Observed MW:

37 kDa

Purification Method:

Antigen affinity purification

Recommended Dilutions:

WB 1:200-1:1000

IHC 1:50-1:500

IF/ICC 1:10-1:100

Applications

Tested Applications:

IF/ICC, IHC, WB, ELISA

Cited Applications:

WB

Species Specificity:

human, mouse

Cited Species:

goat, mouse

**Note-IHC: suggested antigen retrieval with
TE buffer pH 9.0; (*) Alternatively, antigen
retrieval may be performed with citrate
buffer pH 6.0**

Positive Controls:

WB : SH-SY5Y cells,

IHC : human brain tissue,

IF/ICC : SH-SY5Y cells,

Background Information

Basic helix-loop-helix family member e22 (BHLHE22), a basic helix loop helix transcription factor family member, acts as a transcriptional repressor and has a role in cell differentiation in neuron development (PMID: 36941015). BHLHE22 expression serves as a potential biomarker for ICI treatment prediction and favorable prognosis, and that is associated with microenvironment immune status (PMID: 35806162).

Notable Publications

Author	Pubmed ID	Journal	Application
Na Zhou	35675826	Cell Metab	WB
Xiaopeng An	28704526	PLoS One	WB

Storage

Storage:

Store at -20°C. Stable for one year after shipment.

Storage Buffer:

PBS with 0.02% sodium azide and 50% glycerol pH 7.3.

Aliquoting is unnecessary for -20°C storage

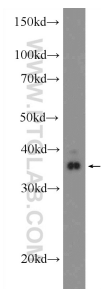
For technical support and original validation data for this product please contact:

T: 4006900926

E: Proteintech-CN@ptglab.comW: ptgcn.com

This product is exclusively available under Proteintech Group brand and is not available to purchase from any other manufacturer.

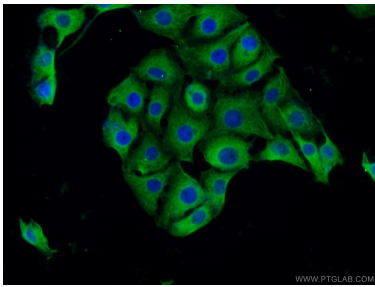
Selected Validation Data



SH-SY5Y cells were subjected to SDS PAGE followed by western blot with 25622-1-AP (BHLHE22 Antibody) at dilution of 1:300 incubated at room temperature for 1.5 hours.



Immunohistochemical analysis of paraffin-embedded human brain tissue slide using 25622-1-AP (BHLHE22 Antibody) at dilution of 1:200 (under 40x lens).



Immunofluorescent analysis of SH-SY5Y cells using 25622-1-AP (BHLHE22 antibody) at dilution of 1:25 and Alexa Fluor 488-conjugated AffiniPure Goat Anti-Rabbit IgG(H+L).