

For Research Use Only

ASB13 Polyclonal antibody

Catalog Number: 25616-1-AP



Basic Information

Catalog Number: 25616-1-AP	GenBank Accession Number: BC012056	Purification Method: Antigen affinity purification
Size: 700 µg/ml	GeneID (NCBI): 79754	Recommended Dilutions: WB 1:500-1:1000 IHC 1:50-1:500 IF 1:10-1:100
Source: Rabbit	UNIPROT ID: Q8WXX3	
Isotype: IgG	Full Name: ankyrin repeat and SOCS box- containing 13	
Immunogen Catalog Number: AG22533	Calculated MW: 278 aa, 30 kDa	
	Observed MW: 30 kDa	

Applications

Tested Applications:
IF/ICC, IHC, WB, ELISA

Species Specificity:
human, mouse, rat

Note-IHC: suggested antigen retrieval with TE buffer pH 9.0; (*) Alternatively, antigen retrieval may be performed with citrate buffer pH 6.0

Positive Controls:

WB: LO2 cells, mouse heart tissue, mouse liver tissue, rat heart tissue, rat liver tissue

IHC: human small intestine tissue, human colon tissue

IF: HepG2 cells,

Background Information

Storage

Storage:
Store at -20°C. Stable for one year after shipment.
Storage Buffer:
PBS with 0.02% sodium azide and 50% glycerol pH 7.3.
Aliquoting is unnecessary for -20°C storage

For technical support and original validation data for this product please contact:

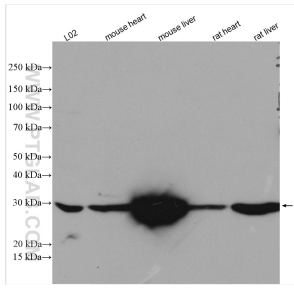
T: 4006900926

E: Proteintech-CN@ptglab.com

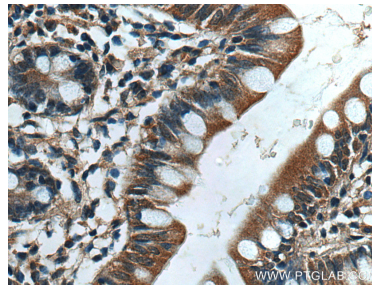
W: ptgcn.com

This product is exclusively available under Proteintech Group brand and is not available to purchase from any other manufacturer.

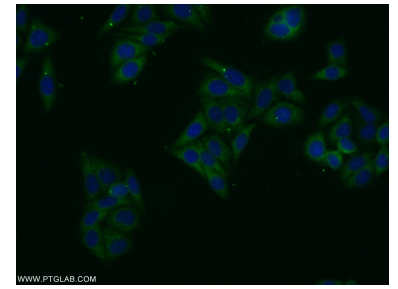
Selected Validation Data



Various lysates were subjected to SDS PAGE followed by western blot with 25616-1-AP (ASB13 antibody) at dilution of 1:600 incubated at room temperature for 1.5 hours.



Immunohistochemical analysis of paraffin-embedded human small intestine tissue slide using 25616-1-AP (ASB13 antibody) at dilution of 1:200 (under 40x lens). Heat mediated antigen retrieval with Tris-EDTA buffer (pH 9.0).



Immunofluorescent analysis of HepG2 cells using 25616-1-AP (ASB13 antibody) at dilution of 1:25 and Alexa Fluor 488-conjugated AffiniPure Goat Anti-Rabbit IgG(H+L).