

For Research Use Only

NFU1 Polyclonal antibody

Catalog Number: 25598-1-AP **1 Publications**



Basic Information

Catalog Number:

25598-1-AP

Size:

550 µg/ml

Source:

Rabbit

Isotype:

IgG

Immunogen Catalog Number:

AG22343

GenBank Accession Number:

BC113692

GeneID (NCBI):

27247

UNIPROT ID:

Q9UM50

Full Name:

NFU1 iron-sulfur cluster scaffold homolog (*S. cerevisiae*)

Calculated MW:

254 aa, 28 kDa

Observed MW:

23-28 kDa

Purification Method:

Antigen affinity purification

Recommended Dilutions:

WB 1:500-1:2000

IP 0.5-4.0 µg for 1.0-3.0 mg of total protein lysate

IF 1:10-1:100

Applications

Tested Applications:

IF/ICC, IP, WB, ELISA

Cited Applications:

WB

Species Specificity:

human, mouse, rat

Cited Species:

human

Positive Controls:

WB: mouse cerebellum tissue, mouse brain tissue, mouse testis tissue

IP: mouse brain tissue,

IF: HepG2 cells,

Background Information

NFU1, also named as HIRA-interacting protein 5 or CGI-33, is a 254 amino acid protein, which belongs to the NifU family. NFU1 localizes in the Mitochondrion. NFU1 is widely expressed in adult tissues. NFU1, as an Iron-sulfur cluster scaffold protein, which can assemble clusters and deliver them to target proteins. It has an association with Multiple mitochondrial dysfunctions syndrome 1.

Notable Publications

Author	Pubmed ID	Journal	Application
Yuyang Liu	37917749	Science	WB

Storage

Storage:

Store at -20°C. Stable for one year after shipment.

Storage Buffer:

PBS with 0.02% sodium azide and 50% glycerol pH 7.3.

Aliquoting is unnecessary for -20°C storage

For technical support and original validation data for this product please contact:

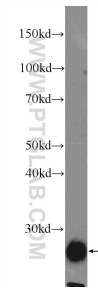
T: 4006900926

E: Proteintech-CN@ptglab.com

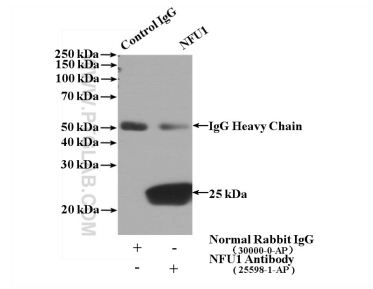
W: ptgcn.com

This product is exclusively available under Proteintech Group brand and is not available to purchase from any other manufacturer.

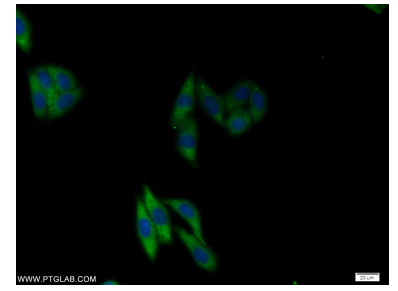
Selected Validation Data



mouse cerebellum tissue were subjected to SDS PAGE followed by western blot with 25598-1-AP (NFU1 Antibody) at dilution of 1:1000 incubated at room temperature for 1.5 hours.



IP result of anti-NFU1 (IP:25598-1-AP, 4ug; Detection:25598-1-AP 1:1000) with mouse brain tissue lysate 4000ug.



Immunofluorescent analysis of HepG2 cells using 25598-1-AP (NFU1 antibody) at dilution of 1:25 and Alexa Fluor 488-conjugated AffiniPure Goat Anti-Rabbit IgG(H+L).