

LRRC52 Polyclonal antibody

Catalog Number: 25584-1-AP

Basic Information

Catalog Number:

25584-1-AP

Size:

730 µg/ml

Source:

Rabbit

Isotype:

IgG

Immunogen Catalog Number:

AG22354

GenBank Accession Number:

BC132981

GeneID (NCBI):

440699

UNIPROT ID:

Q8N7C0

Full Name:

leucine rich repeat containing 52

Calculated MW:

313 aa, 35 kDa

Observed MW:

45 kDa

Purification Method:

Antigen affinity purification

Recommended Dilutions:

WB 1:500-1:1000

Applications

Tested Applications:

WB, ELISA

Species Specificity:

human, mouse, rat

Positive Controls:

WB : mouse skeletal muscle tissue, rat skeletal muscle tissue

Background Information

LRRC52 (leucine-rich repeat-containing protein 52) belongs to the gamma family of the BK channel accessory subunits, which potentially regulate the channel's gating properties (PMID: 22547800). It is dominantly expressed in testis and skeletal muscle, with much lower expression in several other tissues including placenta, kidney, lung, and some glands. LRRC52 has been reported as a Slo3 auxiliary subunit that helps define the specific alkalization dependence of K_{Sper} activation. LRRC52 has a calculated molecular weight of 35 kDa. This polyclonal antibody raised against 24-244aa of human LRRC52 reveals a band of 45 kDa, which is consistent with the molecular weight of glycosylated form of LRRC52 (PMID: 22084117).

Storage

Storage:

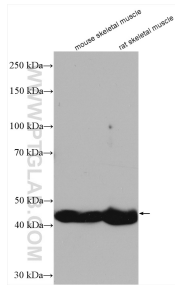
Store at -20°C. Stable for one year after shipment.

Storage Buffer:

PBS with 0.02% sodium azide and 50% glycerol pH 7.3.

Aliquoting is unnecessary for -20°C storage

Selected Validation Data



Various lysates were subjected to SDS PAGE followed by western blot with 25584-1-AP (LRRC52 antibody) at dilution of 1:800 incubated at room temperature for 1.5 hours.