

For Research Use Only

C13orf30 Polyclonal antibody

Catalog Number: 25583-1-AP



Basic Information

Catalog Number:

25583-1-AP

Size:

800 ug/ml

Source:

Rabbit

Isotype:

IgG

Immunogen Catalog Number:

AG22353

GenBank Accession Number:

BC093659

GeneID (NCBI):

144809

UNIPROT ID:

Q8N7L0

Full Name:

chromosome 13 open reading frame

30

Calculated MW:

139 aa, 16 kDa

Purification Method:

Antigen affinity purification

Recommended Dilutions:

IHC 1:50-1:500

IF/ICC 1:50-1:500

Applications

Tested Applications:

IHC, IF/ICC, ELISA

Species Specificity:

human, canine

Note-IHC: suggested antigen retrieval with TE buffer pH 9.0; (*) Alternatively, antigen retrieval may be performed with citrate buffer pH 6.0

Positive Controls:

IHC : human kidney tissue,

IF/ICC : MDCK cells,

Background Information

Storage

Storage:

Store at -20°C. Stable for one year after shipment.

Storage Buffer:

PBS with 0.02% sodium azide and 50% glycerol pH 7.3.

Aliquoting is unnecessary for -20°C storage

For technical support and original validation data for this product please contact:

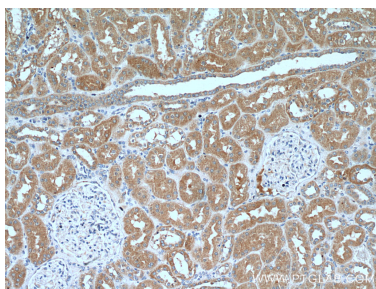
T: 4006900926

E: Proteintech-CN@ptglab.com

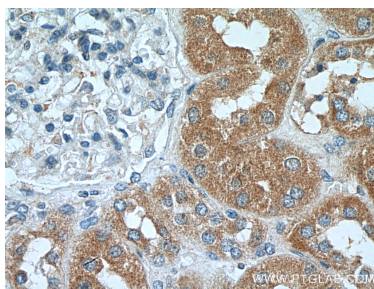
W: ptgcn.com

This product is exclusively available under Proteintech Group brand and is not available to purchase from any other manufacturer.

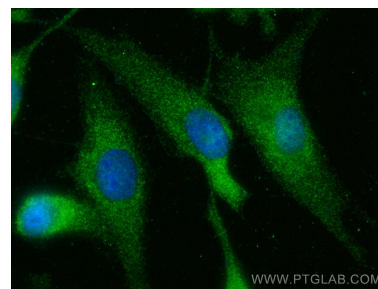
Selected Validation Data



Immunohistochemical analysis of paraffin-embedded human kidney tissue slide using 25583-1-AP (C13orf30 Antibody) at dilution of 1:200 (under 10x lens).



Immunohistochemical analysis of paraffin-embedded human kidney tissue slide using 25583-1-AP (C13orf30 Antibody) at dilution of 1:200 (under 40x lens).



Immunofluorescent analysis of (-20°C Methanol) fixed MDCK cells using C13orf30 antibody (25583-1-AP) at dilution of 1:200 and CoraLite®488-Conjugated AffiniPure Goat Anti-Rabbit IgG(H+L) (SA00013-2).