

For Research Use Only

PNLDC1 Polyclonal antibody

Catalog Number: 25559-1-AP **2 Publications**



Basic Information

Catalog Number: 25559-1-AP	GenBank Accession Number: BC112246	Purification Method: Antigen affinity purification
Size: 800 µg/ml	GeneID (NCBI): 154197	Recommended Dilutions: WB 1:500-1:3000 IHC 1:20-1:200
Source: Rabbit	UNIPROT ID: Q8NA58	
Isotype: IgG	Full Name: poly(A)-specific ribonuclease (PARN)-like domain containing 1	
Immunogen Catalog Number: AG22074	Calculated MW: 520 aa, 60 kDa	
	Observed MW: 55-60 kDa	

Applications

Tested Applications: IHC, WB, ELISA	Positive Controls:
Cited Applications: IHC, WB	WB: Raji cells,
Species Specificity: human, mouse	IHC: human testis tissue,
Cited Species: human, silkworm	
Note-IHC: suggested antigen retrieval with TE buffer pH 9.0; (*) Alternatively, antigen retrieval may be performed with citrate buffer pH 6.0	

Background Information

PNLDC1, also named as Poly(A)-specific ribonuclease PARN-like domain-containing protein 1, is a 520 amino acid protein, which belongs to the CAF1 family. PNLDC1 as a membrane protein localizes in the membrane.

Notable Publications

Author	Pubmed ID	Journal	Application
Siyu Chen	35361267	J Ovarian Res	IHC
Natsuko Izumi	26919431	Cell	WB

Storage

Storage:
Store at -20°C. Stable for one year after shipment.
Storage Buffer:
PBS with 0.02% sodium azide and 50% glycerol pH 7.3.
Aliquoting is unnecessary for -20°C storage

For technical support and original validation data for this product please contact:

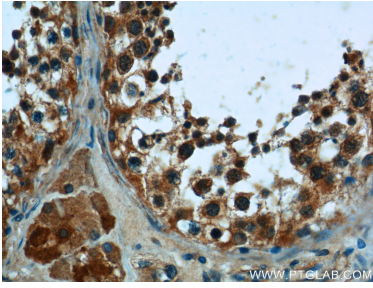
T: 4006900926

E: Proteintech-CN@ptglab.com

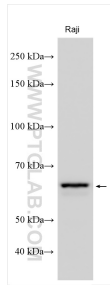
W: ptgcn.com

This product is exclusively available under Proteintech Group brand and is not available to purchase from any other manufacturer.

Selected Validation Data



Immunohistochemical analysis of paraffin-embedded human testis tissue slide using 25559-1-AP (PNLDC1 Antibody) at dilution of 1:50 (under 40x lens).



Various lysates were subjected to SDS PAGE followed by western blot with 25559-1-AP (PNLDC1 antibody) at dilution of 1:1500 incubated at room temperature for 1.5 hours.