

For Research Use Only

# ARMC6 Polyclonal antibody, PBS Only

Catalog Number: 25558-1-PBS



## Basic Information

Catalog Number:

25558-1-PBS

Source:

Rabbit

Isotype:

IgG

Immunogen Catalog Number:

AG22278

GenBank Accession Number:

BC067125

GeneID (NCBI):

93436

UNIPROT ID:

Q6NXE6

Full Name:

armadillo repeat containing 6

Calculated MW:

501 aa, 54 kDa

Observed MW:

40-50 kDa

Purification Method:

Antigen affinity purification

## Applications

Tested Applications:

WB, IF/ICC, Indirect ELISA

Species Specificity:

human

## Background Information

ARMC6 (Armadillo repeat-containing protein 6) is a Protein Coding gene. Diseases associated with ARMC6 include Leber Congenital Amaurosis 1. The function of this gene's protein product has not been determined.

## Storage

Storage:

Store at -80°C.

**The product is shipped with ice packs. Upon receipt, store it immediately at -80°C**

Storage Buffer:

PBS only, pH7.3

For technical support and original validation data for this product please contact:

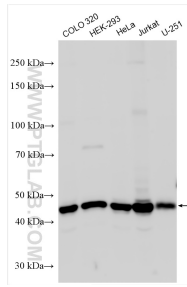
T: 4006900926

E: [Proteintech-CN@ptglab.com](mailto:Proteintech-CN@ptglab.com)

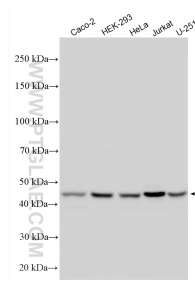
W: [ptgcn.com](http://ptgcn.com)

**This product is exclusively available under Proteintech Group brand and is not available to purchase from any other manufacturer.**

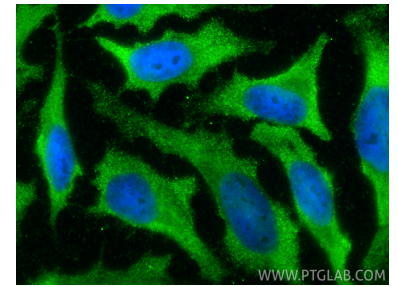
## Selected Validation Data



Various lysates were subjected to SDS PAGE followed by western blot with 25558-1-AP (ARMC6 antibody) at dilution of 1:2000 incubated at room temperature for 1.5 hours. This data was developed using the same antibody clone with 25558-1-PBS in a different storage buffer formulation.



Various lysates were subjected to SDS PAGE followed by western blot with 25558-1-AP (ARMC6 antibody) at dilution of 1:20000 incubated at room temperature for 1.5 hours. This data was developed using the same antibody clone with 25558-1-PBS in a different storage buffer formulation.



Immunofluorescent analysis of (-20°C Ethanol) fixed HeLa cells using ARMC6 antibody (25558-1-AP) at dilution of 1:200 and CoraLite®488-Conjugated Goat Anti-Rabbit IgG(H+L) (SA00013-2). This data was developed using the same antibody clone with 25558-1-PBS in a different storage buffer formulation.