

For Research Use Only

LIX1L Polyclonal antibody

Catalog Number: 25557-1-AP



Basic Information

Catalog Number:

25557-1-AP

Size:

850 µg/ml

Source:

Rabbit

Isotype:

IgG

Immunogen Catalog Number:

AG22209

GenBank Accession Number:

BC035727

GeneID (NCBI):

128077

UNIPROT ID:

Q8IVB5

Full Name:

Lix1 homolog (mouse)-like

Calculated MW:

337 aa, 37 kDa

Observed MW:

35-40 kDa

Purification Method:

Antigen affinity purification

Recommended Dilutions:

WB 1:500-1:2000

IF/ICC 1:200-1:800

Applications

Tested Applications:

WB, IF/ICC, ELISA

Species Specificity:

human

Positive Controls:

WB : HeLa cells, Jurkat cells, SH-SY5Y cells

IF/ICC : K-562 cells,

Background Information

Limb expression 1-like protein (LIX1L) is a putative RNA binding protein that contains a double-stranded RNA-binding motif. LIX1L is highly expressed in various cancer tissues.

Storage

Storage:

Store at -20°C. Stable for one year after shipment.

Storage Buffer:

PBS with 0.02% sodium azide and 50% glycerol pH 7.3.

Aliquoting is unnecessary for -20°C storage

For technical support and original validation data for this product please contact:

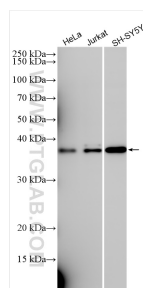
T: 4006900926

E: Proteintech-CN@ptglab.com

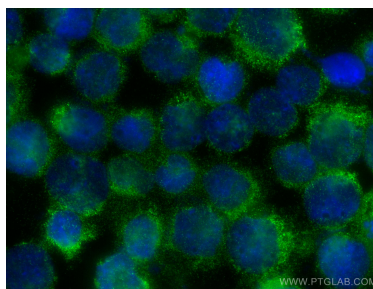
W: ptgcn.com

This product is exclusively available under Proteintech Group brand and is not available to purchase from any other manufacturer.

Selected Validation Data



Various lysates were subjected to SDS PAGE followed by western blot with 25557-1-AP (LIX1L antibody) at dilution of 1:1000 incubated at room temperature for 1.5 hours.



Immunofluorescent analysis of (4% PFA) fixed K-562 cells using LIX1L antibody (25557-1-AP) at dilution of 1:400 and CoraLite®488-Conjugated AffiniPure Goat Anti-Rabbit IgG(H+L).