

MCP-1/CCL2 Polyclonal antibody

Catalog Number: 25542-1-AP

66 Publications

Basic Information

Catalog Number:

25542-1-AP

Concentration:

600 µg/ml

Source:

Rabbit

Isotype:

IgG

Immunogen Catalog Number:

AG10601

GenBank Accession Number:

BC009716

GeneID (NCBI):

6347

UNIPROT ID:

P13500

Full Name:

chemokine (C-C motif) ligand 2

Calculated MW:

99 aa, 11 kDa

Observed MW:

11 kDa

Purification Method:

Antigen affinity purification

Recommended Dilutions:

WB 1:1000-1:4000

IHC 1:50-1:500

Applications

Tested Applications:

IHC, ELISA

Cited Applications:

IHC, IF, Blocking

Species Specificity:

human

Cited Species:

human, rabbit

Note-IHC: suggested antigen retrieval with TE buffer pH 9.0; (*) Alternatively, antigen retrieval may be performed with citrate buffer pH 6.0

Positive Controls:

WB : PMA, LPS and Brefeldin A treated THP-1 cells,

IHC : human breast cancer tissue, human pancreas cancer tissue, human liver cancer tissue

Background Information

Monocyte chemoattractant protein 1 (MCP1; also known as CCL2), is a chemokine that can be expressed in monocytes, macrophages, and endothelial cells, and belongs to the CC subfamily of chemokines. Chemokines are a superfamily of secreted proteins involved in immunoregulatory and inflammatory processes. Research has shown that the expression of MCP1 increases in the serum of patients with acute myocarditis. MCP1 is up-regulated in many types of CNS injury, including ischemia, hemorrhage, trauma, infection, hypoxia, and peripheral nerve axotomy. MCP1 has also been implicated in the pathogenesis of diseases characterized by monocytic infiltrates, such as psoriasis, rheumatoid arthritis, and atherosclerosis.

Notable Publications

Author	Pubmed ID	Journal	Application
Yun Zhu	31660067	Theranostics	IHC
Xiaojuan Ma	32900249	J Recept Signal Transduct Res	
Jiajun Chen	36367498	Life Sci	IHC, IF

Storage

Storage:

Store at -20°C. Stable for one year after shipment.

Storage Buffer:

PBS with 0.02% sodium azide and 50% glycerol, pH7.3

Aliquoting is unnecessary for -20°C storage

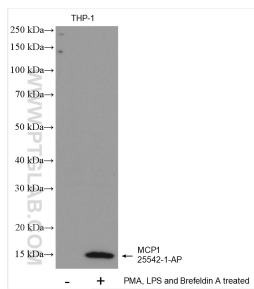
For technical support and original validation data for this product please contact:

T: 4006900926

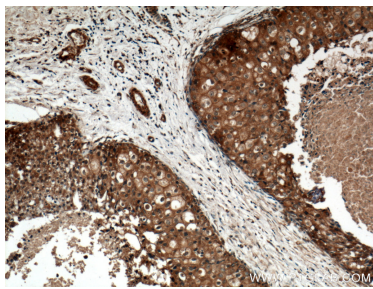
E: Proteintech-CN@ptglab.comW: ptgcn.com

This product is exclusively available under Proteintech Group brand and is not available to purchase from any other manufacturer.

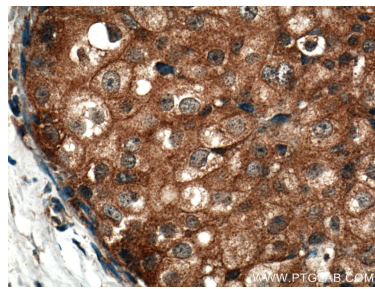
Selected Validation Data



Untreated THP-1 cells, THP-1 cells (treated with 50 nM PMA and 5 ug/ml LPS for 24 hours, with addition of 300ng/ml Brefeldin A for the last 3 hours.) were subjected to SDS PAGE followed by western blot with 25542-1-AP (MCP1 antibody) at dilution of 1:2000 incubated at room temperature for 1.5 hours.



Immunohistochemical analysis of paraffin-embedded human breast cancer tissue slide using 25542-1-AP (MCP1 antibody) at dilution of 1:200 (under 10x lens).



Immunohistochemical analysis of paraffin-embedded human breast cancer tissue slide using 25542-1-AP (MCP1 antibody) at dilution of 1:200 (under 40x lens).