

For Research Use Only

# SEC14L1 Polyclonal antibody

Catalog Number: 25541-1-AP



## Basic Information

Catalog Number:

25541-1-AP

Size:

600 µg/ml

Source:

Rabbit

Isotype:

IgG

Immunogen Catalog Number:

AG22233

GenBank Accession Number:

BC142979

GeneID (NCBI):

6397

UNIPROT ID:

Q92503

Full Name:

SEC14-like 1 (*S. cerevisiae*)

Calculated MW:

719 aa, 82 kDa

Observed MW:

81 kDa, 77 kDa

Purification Method:

Antigen affinity purification

Recommended Dilutions:

WB 1:500-1:2000

IP 0.5-4.0 µg for 1.0-3.0 mg of total protein lysate

## Applications

Tested Applications:

IP, WB, ELISA

Species Specificity:

human

Positive Controls:

WB : HEK-293 cells, Y79 cells, HeLa cells

IP : HEK-293 cells,

## Background Information

SEC14L1 (SEC14-like protein 1) is a member of SEC14 family in mammals with the potential to control local phospholipid content in membranes. SEC14L1 may act as a phospholipid transfer protein. It has also been reported that SEC14L1 functions as a novel negative regulator of RIG-I-mediated antiviral signaling and is involved in innate immunity (PMID: 17092608; 23843640). SEC14L1 has three isoforms with the molecular mass of 81.2kDa, 81.8kDa and 77.1kDa.

## Storage

Storage:

Store at -20°C. Stable for one year after shipment.

Storage Buffer:

PBS with 0.02% sodium azide and 50% glycerol pH 7.3.

Aliquoting is unnecessary for -20°C storage

For technical support and original validation data for this product please contact:

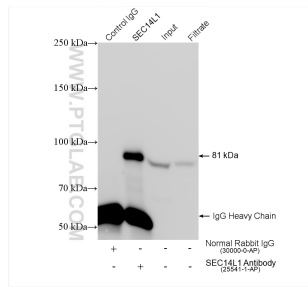
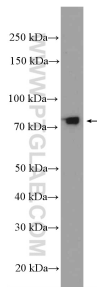
T: 4006900926

E: [Proteintech-CN@ptglab.com](mailto:Proteintech-CN@ptglab.com)

W: [ptgcn.com](http://ptgcn.com)

This product is exclusively available under Proteintech Group brand and is not available to purchase from any other manufacturer.

## Selected Validation Data



Y79 cells were subjected to SDS PAGE followed by western blot with 25541-1-AP (SEC14L1 Antibody) at dilution of 1:300 incubated at room temperature for 1.5 hours.

IP result of anti-SEC14L1 (IP:25541-1-AP, 4ug; Detection:25541-1-AP 1:500) with HEK-293 cells lysate 1480 ug.