

For Research Use Only

# TMEM115 Polyclonal antibody, PBS Only

Catalog Number: 25536-1-PBS



## Basic Information

<b>Catalog Number:</b> 25536-1-PBS	<b>GenBank Accession Number:</b> BC017367	<b>Purification Method:</b> Antigen affinity purification
<b>Size:</b> 1 mg/ml	<b>GeneID (NCBI):</b> 11070	
<b>Source:</b> Rabbit	<b>UNIPROT ID:</b> Q12893	
<b>Isotype:</b> IgG	<b>Full Name:</b> transmembrane protein 115	
<b>Immunogen Catalog Number:</b> AG22258	<b>Calculated MW:</b> 351 aa, 38 kDa	
	<b>Observed MW:</b> 35-38 kDa	

## Applications

**Tested Applications:**  
WB, IHC, Indirect ELISA

**Species Specificity:**  
human, mouse, rat

## Background Information

TMEM115 also known as PL6, located on chromosome 3p21.3, was originally thought to function as a tumor suppressor. TMEM115 is an integral membrane protein of the Golgi complex involved in retrograde transport.

## Storage

**Storage:**  
Store at -80°C.  
**The product is shipped with ice packs. Upon receipt, store it immediately at -80°C**

**Storage Buffer:**  
PBS Only

For technical support and original validation data for this product please contact:

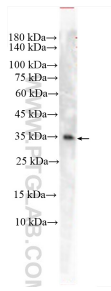
T: 4006900926

E: [Proteintech-CN@ptglab.com](mailto:Proteintech-CN@ptglab.com)

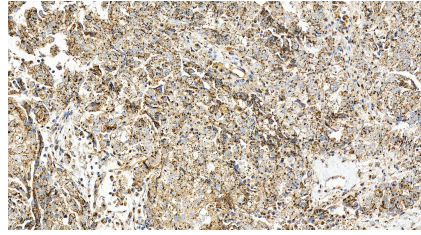
W: [ptgcn.com](http://ptgcn.com)

**This product is exclusively available under Proteintech Group brand and is not available to purchase from any other manufacturer.**

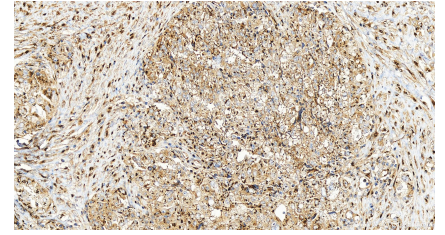
## Selected Validation Data



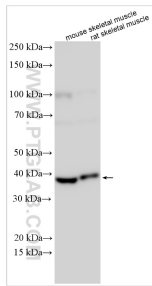
U2OS cells were subjected to SDS PAGE followed by western blot with 25536-1-AP (TMEM115 antibody) at dilution of 1:800 incubated at room temperature for 1.5 hours. This data was developed using the same antibody clone with 25536-1-PBS in a different storage buffer formulation.



Immunohistochemical analysis of paraffin-embedded human ovary cancer tissue slide using 25536-1-AP (TMEM115 antibody) at dilution of 1:200 (under 20x lens). Heat mediated antigen retrieval with Tris-EDTA buffer (pH 9.0). This data was developed using the same antibody clone with 25536-1-PBS in a different storage buffer formulation.



Immunohistochemical analysis of paraffin-embedded human ovary cancer tissue slide using 25536-1-AP (TMEM115 antibody) at dilution of 1:200 (under 20x lens). Heat mediated antigen retrieval with Tris-EDTA buffer (pH 9.0). This data was developed using the same antibody clone with 25536-1-PBS in a different storage buffer formulation.



Various lysates were subjected to SDS PAGE followed by western blot with 25536-1-AP (TMEM115 antibody) at dilution of 1:1000 incubated at room temperature for 1.5 hours. This data was developed using the same antibody clone with 25536-1-PBS in a different storage buffer formulation.