

For Research Use Only

# CHORDC1 Polyclonal antibody

Catalog Number: 25525-1-AP



## Basic Information

Catalog Number:

25525-1-AP

Size:

600 µg/ml

Source:

Rabbit

Isotype:

IgG

Immunogen Catalog Number:

AG18315

GenBank Accession Number:

BC072461

GeneID (NCBI):

26973

UNIPROT ID:

Q9UHD1

Full Name:

cysteine and histidine-rich domain  
(CHORD)-containing 1

Calculated MW:

332 aa, 37 kDa

Observed MW:

37 kDa

Purification Method:

Antigen affinity purification

Recommended Dilutions:

WB 1:1000-1:4000

IF 1:50-1:500

## Applications

Tested Applications:

IF/ICC, WB, ELISA

Species Specificity:

human

Positive Controls:

WB : HEK-293 cells, HeLa cells, K-562 cells

IF : HEK-293 cells,

## Background Information

### Storage

Storage:

Store at -20°C. Stable for one year after shipment.

Storage Buffer:

PBS with 0.02% sodium azide and 50% glycerol pH 7.3.

Aliquoting is unnecessary for -20°C storage

For technical support and original validation data for this product please contact:

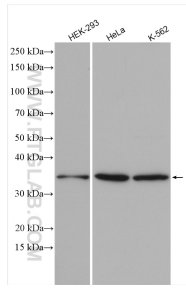
T: 4006900926

E: [Proteintech-CN@ptglab.com](mailto:Proteintech-CN@ptglab.com)

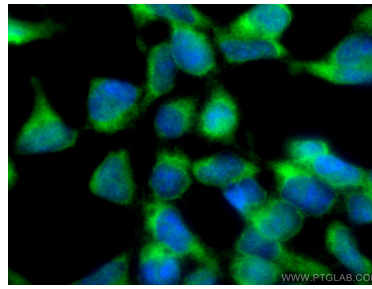
W: [ptgcn.com](http://ptgcn.com)

This product is exclusively available under Proteintech Group brand and is not available to purchase from any other manufacturer.

## Selected Validation Data



Various lysates were subjected to SDS PAGE followed by western blot with 25525-1-AP (CHORDC1 antibody) at dilution of 1:2000 incubated at room temperature for 1.5 hours.



Immunofluorescent analysis of (-20°C Methanol) fixed HEK-293 cells using CHORDC1 antibody (25525-1-AP) at dilution of 1:200 and CoraLite®488-Conjugated AffiniPure Goat Anti-Rabbit IgG(H+L).