

For Research Use Only

# LYPD6B Polyclonal antibody

Catalog Number: 25508-1-AP



## Basic Information

<b>Catalog Number:</b> 25508-1-AP	<b>GenBank Accession Number:</b> BC040176	<b>Purification Method:</b> Antigen affinity purification
<b>Concentration:</b> 550 ug/ml	<b>GeneID (NCBI):</b> 130576	<b>Recommended Dilutions:</b> IHC: 1:50-1:500
<b>Source:</b> Rabbit	<b>UNIPROT ID:</b> Q8NI32	
<b>Isotype:</b> IgG	<b>Full Name:</b> LY6/PLAUR domain containing 6B	
<b>Immunogen Catalog Number:</b> AG22008	<b>Calculated MW:</b> 183 aa, 20 kDa	

## Applications

**Tested Applications:**  
IHC, ELISA

**Species Specificity:**  
human, mouse

**Note-IHC: suggested antigen retrieval with TE buffer pH 9.0; (\*) Alternatively, antigen retrieval may be performed with citrate buffer pH 6.0**

**Positive Controls:**

IHC : mouse lung tissue,

## Background Information

LYPD6B (containing the Ly6/PLAUR domain protein 6B), also known as LYPD7, is a member of the Ly6/uPAR superfamily of proteins. These proteins typically exhibit membrane-anchoring properties and participate in critical cellular signaling and adhesion processes. It is predominantly expressed in the central nervous system. LYPD6B functions as a key regulatory subunit that interacts with and modulates nicotinic acetylcholine receptors (nAChRs), specifically influencing their maturation, stability, and functional properties at synapses. This interaction is crucial for normal cholinergic signaling, which underpins cognitive functions such as learning and memory. Dysfunction of the LYPD6B is associated with multiple neurological disorders. (PMID: 23186997, PMID: 34631692, PMID: 39433742)

## Storage

**Storage:**

Store at -20°C. Stable for one year after shipment.

**Storage Buffer:**

PBS with 0.02% sodium azide and 50% glycerol, pH7.3

Aliquoting is unnecessary for -20°C storage

For technical support and original validation data for this product please contact:

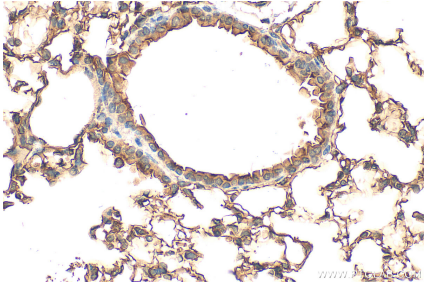
T: 4006900926

E: [Proteintech-CN@ptglab.com](mailto:Proteintech-CN@ptglab.com)

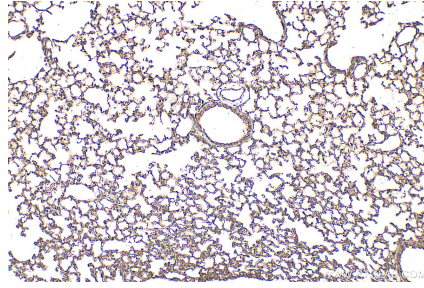
W: [ptgcn.com](http://ptgcn.com)

**This product is exclusively available under Proteintech Group brand and is not available to purchase from any other manufacturer.**

## Selected Validation Data



Immunohistochemical analysis of paraffin-embedded mouse lung tissue slide using 25508-1-AP (LYPD6B antibody) at dilution of 1:200 (under 40x lens). Heat mediated antigen retrieval with Tris-EDTA buffer (pH 9.0).



Immunohistochemical analysis of paraffin-embedded mouse lung tissue slide using 25508-1-AP (LYPD6B antibody) at dilution of 1:200 (under 10x lens). Heat mediated antigen retrieval with Tris-EDTA buffer (pH 9.0).