

For Research Use Only

# CKAP2 Polyclonal antibody

Catalog Number: 25486-1-AP

Featured Product

3 Publications



## Basic Information

Catalog Number:

25486-1-AP

Size:

900 ug/ml

Source:

Rabbit

Isotype:

IgG

Immunogen Catalog Number:

AG21901

GenBank Accession Number:

BC136332

GeneID (NCBI):

26586

UNIPROT ID:

Q8WWK9

Full Name:

cytoskeleton associated protein 2

Calculated MW:

683 aa, 77 kDa

Observed MW:

75-85 kDa

Purification Method:

Antigen affinity purification

Recommended Dilutions:

WB 1:500-1:2000

IHC 1:50-1:500

IF/ICC 1:20-1:200

## Applications

Tested Applications:

WB, IHC, IF/ICC, ELISA

Cited Applications:

WB, IF

Species Specificity:

human

Cited Species:

human

**Note-IHC: suggested antigen retrieval with TE buffer pH 9.0; (\*) Alternatively, antigen retrieval may be performed with citrate buffer pH 6.0**

Positive Controls:

WB : HeLa cells, HEK-293 cells, PC-3 cells, SGC-7901 cells

IHC : human skin cancer tissue,

IF/ICC : HeLa cells,

## Background Information

### Notable Publications

Author	Pubmed ID	Journal	Application
Alexsandro dos Santos	35954424	Cancers (Basel)	WB,IF
Kuanyu Wang	30066946	Oncol Rep	WB
Lia Mara Gomes Paim	38381793	Proc Natl Acad Sci U S A	WB,IF

## Storage

Storage:

Store at -20°C. Stable for one year after shipment.

Storage Buffer:

PBS with 0.02% sodium azide and 50% glycerol pH 7.3.

Aliquoting is unnecessary for -20°C storage

For technical support and original validation data for this product please contact:

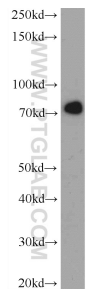
T: 4006900926

E: [Proteintech-CN@ptglab.com](mailto:Proteintech-CN@ptglab.com)

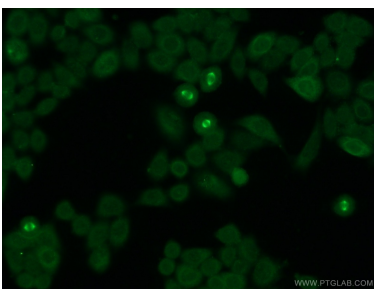
W: [ptgcn.com](http://ptgcn.com)

This product is exclusively available under Proteintech Group brand and is not available to purchase from any other manufacturer.

Selected Validation Data



HeLa cells were subjected to SDS PAGE followed by western blot with 25486-1-AP (CKAP2 Antibody) at dilution of 1:1000 incubated at room temperature for 1.5 hours.



Immunofluorescent analysis of HeLa cells using 25486-1-AP (CKAP2 antibody) at dilution of 1:50 and Alexa Fluor 488-conjugated AffiniPure Goat Anti-Rabbit IgG(H+L).

Immunohistochemical analysis of paraffin-embedded skin cancer slide using 25486-1-AP (CKAP2 antibody) at dilution of 1:200 (under 20x lens). Heat mediated antigen retrieval with Tris-EDTA buffer (pH 9.0).