

For Research Use Only

PNPLA4 Polyclonal antibody, PBS Only

Catalog Number: 25469-1-PBS



Basic Information

Catalog Number:

25469-1-PBS

Concentration:

1 mg/ml

Source:

Rabbit

Isotype:

IgG

Immunogen Catalog Number:

AG22091

GenBank Accession Number:

BC020746

GeneID (NCBI):

8228

UNIPROT ID:

P41247

Full Name:

patatin-like phospholipase domain containing 4

Calculated MW:

253 aa, 28 kDa

Observed MW:

28 kDa

Purification Method:

Antigen affinity purification

Applications

Tested Applications:

WB, IHC, IP, Indirect ELISA

Species Specificity:

human, mouse

Background Information

PNPLA4 (Patatin-like phospholipase domain-containing protein 4) is also named as DXS1283E, GS2. It participate in triacylglycerol hydrolysis and the acyl-CoA independent transacylation of acylglycerols, there by facilitating energy mobilization and storage in adipocytes. This protein has 2 isoforms produced by alternative splicing.

Storage

Storage:

Store at -80°C.

The product is shipped with ice packs. Upon receipt, store it immediately at -80°C

Storage Buffer:

PBS only, pH7.3

For technical support and original validation data for this product please contact:

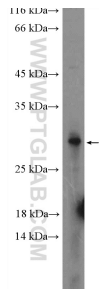
T: 4006900926

E: Proteintech-CN@ptglab.com

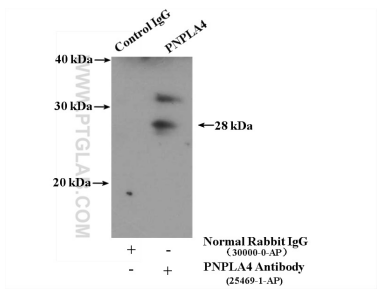
W: ptgcn.com

This product is exclusively available under Proteintech Group brand and is not available to purchase from any other manufacturer.

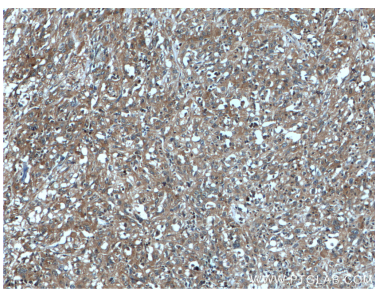
Selected Validation Data



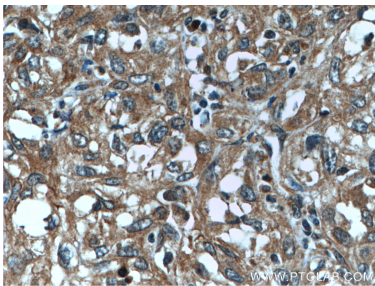
HeLa cells were subjected to SDS PAGE followed by western blot with 25469-1-AP (PNPLA4 Antibody) at dilution of 1:600 incubated at room temperature for 1.5 hours. This data was developed using the same antibody clone with 25469-1-PBS in a different storage buffer formulation.



IP result of anti-PNPLA4 (IP:25469-1-AP, 4ug; Detection:25469-1-AP 1:300) with HeLa cells lysate 3200ug. This data was developed using the same antibody clone with 25469-1-PBS in a different storage buffer formulation.



Immunohistochemical analysis of paraffin-embedded human cervical cancer tissue slide using 25469-1-AP (PNPLA4 antibody) at dilution of 1:200 (under 10x lens). This data was developed using the same antibody clone with 25469-1-PBS in a different storage buffer formulation.



Immunohistochemical analysis of paraffin-embedded human cervical cancer tissue slide using 25469-1-AP (PNPLA4 antibody) at dilution of 1:200 (under 40x lens). This data was developed using the same antibody clone with 25469-1-PBS in a different storage buffer formulation.