

PNPLA4 Polyclonal antibody

Catalog Number: 25469-1-AP

1 Publications

Basic Information

Catalog Number:

25469-1-AP

Size:

800 µg/ml

Source:

Rabbit

Isotype:

IgG

Immunogen Catalog Number:

AG22091

GenBank Accession Number:

BC020746

GeneID (NCBI):

8228

UNIPROT ID:

P41247

Full Name:

patatin-like phospholipase domain containing 4

Calculated MW:

253 aa, 28 kDa

Observed MW:

28 kDa

Purification Method:

Antigen affinity purification

Recommended Dilutions:

WB 1:500-1:1000

IP 0.5-4.0 µg for 1.0-3.0 mg of total protein lysate

IHC 1:50-1:500

Applications

Tested Applications:

IHC, IP, WB, ELISA

Cited Applications:

WB

Species Specificity:

human, mouse

Cited Species:

mouse

Note-IHC: suggested antigen retrieval with TE buffer pH 9.0; (*) Alternatively, antigen retrieval may be performed with citrate buffer pH 6.0

Positive Controls:

WB : HeLa cells,

IP : HeLa cells,

IHC : human cervical cancer tissue,

Background Information

PNPLA4 (Patatin-like phospholipase domain-containing protein 4) is also named as DXS1283E, GS2. It participate in triacylglycerol hydrolysis and the acyl-CoA independent transacylation of acylglycerols, there by facilitating energy mobilization and storage in adipocytes. This protein has 2 isoforms produced by alternative splicing.

Notable Publications

Author	Pubmed ID	Journal	Application
Ryuta Sugihara	37524709	Nat Commun	WB

Storage

Storage:

Store at -20°C. Stable for one year after shipment.

Storage Buffer:

PBS with 0.02% sodium azide and 50% glycerol pH 7.3.

Aliquoting is unnecessary for -20°C storage

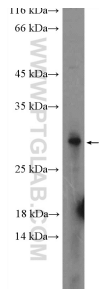
For technical support and original validation data for this product please contact:

T: 4006900926

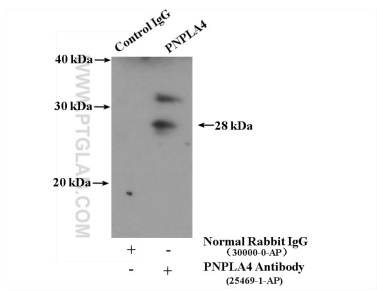
E: Proteintech-CN@ptglab.comW: ptgcn.com

This product is exclusively available under Proteintech Group brand and is not available to purchase from any other manufacturer.

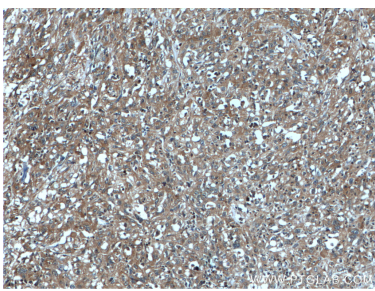
Selected Validation Data



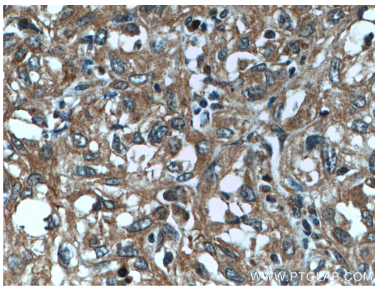
HeLa cells were subjected to SDS PAGE followed by western blot with 25469-1-AP (PNPLA4 Antibody) at dilution of 1:600 incubated at room temperature for 1.5 hours.



IP result of anti-PNPLA4 (IP:25469-1-AP, 4ug; Detection:25469-1-AP 1:300) with HeLa cells lysate 3200ug.



Immunohistochemical analysis of paraffin-embedded human cervical cancer tissue slide using 25469-1-AP (PNPLA4 antibody) at dilution of 1:200 (under 10x lens).



Immunohistochemical analysis of paraffin-embedded human cervical cancer tissue slide using 25469-1-AP (PNPLA4 antibody) at dilution of 1:200 (under 40x lens).